



# > Americas



Bring your life  
[thule.com](http://thule.com)





## › Domestic Manufacturing

80% of Thule bike racks and 95% of Thule Cargo boxes sold in North America are produced within our three domestic manufacturing facilities. Local manufacturing allows for Thule to have a greater speed to market, better control our products' quality, and reduce our carbon footprint.

The first two facilities, totaling over 175,000 sq.ft., are located at Thule America's headquarters in Seymour, Connecticut. Here, we turn over 4 million pounds of steel into Thule bike racks. We employ over 200 people to help manufacture the product. This facility runs on 100% renewable energy with 1,300 solar panels generating 300kw of solar power in addition to the purchase of wind-generated power.

The second facility is 200,000 sq. ft., located just outside Chicago, Illinois. From raw material to finished goods, all cargo boxes made in the US are produced here from 100% renewable energy. As a part of this process, we recycle use 100% all of the plastic waste from production. These materials are ground up, sent back to our supplier who then incorporates them into the production of new plastic sheets. The result; 80% of the plastic in a Thule cargo box is recycled.



**THULE**<sup>®</sup>  
SWEDEN

› Bike



Bring your life  
[thule.com](https://www.thule.com)



New



## › Thule Epos

**The most versatile bike carrier  
for all type of bikes**

Thule Epos bike rack fits all types of bikes and is fast, easy and convenient to use – it takes minimal effort to mount bikes thanks to an innovative telescopic bike attachment system. The bike arms simply let you attach your bike anywhere on the frame or the rear wheel, providing you with numerous attachment options. You can load and unload up to three bikes in any order – all types of frames and geometries are supported, including ebikes, mountain bikes, gravel bikes, and bikes with fenders and racks.





New

Extra-long wheel holders enable easy transport of bikes with long wheel-bases, up to 53"



Fast and easy loading and unloading of all types of bikes and e-bikes. The patented telescopic bike arms with pivoting cradle and steel reinforced straps attach to the bike frame or rear wheel

The high load capacity of 66lbs/bike makes it possible to transport heavy ebikes

Ratcheting pump buckles and wheel straps for easy fastening of tires up to 3.2" (up to 5" tires with a separately sold accessory)

With bikes mounted, the trunk is accessible with a smart foot pedal tilt. Without bikes, the trunk is accessible without tilt

## > Thule Epos

The most versatile bike carrier for all type of bikes

## Compatible with all types of bikes and ebikes

Universal fit with steel reinforced straps for attaching all types of bikes including carbon bikes and e-bikes, no matter what the frame looks like.

## Fast and easy to use

Load and unload bikes in any order faster and easier than ever. The revolutionary bike arms safely fasten your bikes with generous spacing between the bikes.

## Fully foldable design

Fully foldable for convenient carry and storage. The compact design makes it possible to keep the bike carrier in the trunk wherever you go, so that you are ready for bike adventures anytime.

## Accessories



### Thule Epos Light & Plate Kit

Fully functional and integrated lighting kit with modern styling, specifically designed for Thule Epos for increased visibility in all lighting and weather conditions.



### Thule High Grade Lock

For added security and protection against theft, Thule has teamed up with ABUS®, industry leader in lock solutions for bikes.



### Thule Foldable Loading Ramp

For easy loading and unloading of heavier bikes.

## TECHNICAL SPECIFICATIONS

### THULE NUMBER

903210 2-Bike  
903211 2-Bike with lights  
903310 3-Bike

### PRODUCT WEIGHT

38lbs 2-Bike  
51lbs 3-Bike

### LOAD CAPACITY

132lbs 2-Bike  
160lbs 3-Bike

### MAX BIKE WEIGHT

66lbs

### HITCH SIZE

2" - 903310  
1.25"/2" Compatible - 903210 & 903211

### BIKE SPACING

9.8"

### COMMERCIAL AVAILABILITY

June, 2023



# Thule Epos

**Model name:**                      **Model number:** 903310    **Price:** \$1,099.95

## FEATURES

Fast and easy loading and unloading of all types of bikes and ebikes. The patented telescopic bike arms with pivoting cradle and steel reinforced straps attach to the bike frame or rear wheel.

Generous 9.8" (25cm) distance between bikes reduces risk of bike-to-bike contact

Extra-long wheel holders enable easy transport of bikes with long wheelbases, up to 53" (1350mm)

Ratcheting pump buckles and wheel straps for easy fastening of tires up to 3,2" (up to 5" tires with a separately sold accessory)

Fully foldable for convenient installation, handling, and storage

With bikes mounted, the trunk is accessible with an outboard smart foot pedal tilt. Without bikes, the trunk is accessible without tilt

Tool-free AutoAttach system with easy grip lever allows for simple and secure mounting and removal of rack

Ergonomic transport of the bike rack thanks to the integrated carrying handles and convenient transport wheels

Locks your bikes to the bike carrier and your carrier to the car (locks included). The Thule Epos High-Grade Lock developed together with ABUS is sold as a separate accessory.



Wide range of available such developed by Thule Epos Light and visibility, a convenient and storage (accessory)



Aluminum/Black - 2 bike  
903210

## TECHNICAL SPECIFICATIONS

**COLOR** ..... ALUMINUM/BLACK  
**MODEL NUMBER** ..... 903310  
**UPC-A** ..... 091021617018  
**AMERICAS ARTICLE NUMBER** .... 903310





# Thule Epos

**Model name:**                      **Model number:** 903211      **Price:** \$1,249.95

Thule Epos bike rack fits all types of bikes and is fast, easy and convenient to use – it takes minimal effort to mount bikes thanks to an innovative telescopic bike attachment system. The bike arms simply let you attach your bike anywhere on the frame or the rear wheel, providing you with numerous attachment options. You can load and unload up to two bikes in any order – all types of frames and geometries are supported, including ebikes, mountain bikes, gravel bikes, and bikes with fenders and racks.



## FEATURES

Fast and easy loading and unloading of all types of bikes and ebikes. The patented telescopic bike arms with pivoting cradle and steel reinforced straps attach to the bike frame or rear wheel.

The high load capacity of 66lb (30kg)/bike & max load capacity of 132lb (60kg) makes it possible to transport heavy ebikes

Integrated modern designed taillights with illuminated license plate holder. Increases visibility in all lighting & weather conditions and features running lights, brake lights, & turn indicators that easily connect to existing 4-pin

Generous 9.8" (25cm) distance between bikes reduces risk of bike-to-bike contact

Extra-long wheel holders enable easy transport of bikes with long wheelbases, up to 53" (1350mm)

Ratcheting pump buckles and wheel straps for easy fastening of tires up to 3.2" (up to 5" tires with a separately sold accessory)

Fully foldable for convenient installation, handling, and storage

With bikes mounted, the trunk is accessible with an outboard smart foot pedal tilt. Without bikes, the trunk is accessible without tilt

Tool-free AutoAttach system with easy grip lever allows for simple and secure mounting and removal of rack



Ergonomic trunk...  
convenient tra...

## TECHNICAL SPECIFICATIONS

- COLOR ..... ALUMINUM/BLACK
- MODEL NUMBER ..... 903211
- UPC-A ..... 091021431430
- AMERICAS ARTICLE NUMBER .... 903211



# Thule EasyFold XT 2

**Model name:**                      **Model number:** 903202    **Price:** \$999.95

The fully foldable, compact, and easy-to-use hitch-mounted bike rack for all types of bikes.



## FEATURES

Fully foldable for convenient mounting, handling and storage

High load capacity enabling transport of e-bikes and heavy mountain bikes

Easy mounting of bikes through detachable bike arms with lockable Thule AcuTight torque limiter knobs that click when optimal torque is reached

Large distance between wheel holders enabling transport of sturdy bikes with large wheel bases

Wheel straps with adjustable pump buckles for fastening wheels. (Optional XXL Wheel Strap kit to fit longer wheelbases and tires up to 4.7")

Easy trunk access even with bikes mounted, thanks to smart foot pedal tilt

Ergonomic transport of the bike rack thanks to the integrated transport wheels and carrying handle

Foldable bike loading ramp integrates into rack for convenient storage (included)

Lock your bikes to the bike rack and your bike rack to the receiver (locks included)

## TECHNICAL SPECIFICATIONS

<b>MAX NUMBER OF BIKES</b> .....	2
<b>LOAD CAPACITY(POUNDS)</b> .....	130
<b>MAX BIKE WEIGHT</b> .....	65
<b>DIMENSIONS (LXWXH)</b> .....	48.4 X 25 X 26.7 IN
<b>FOLDED DIMENSIONS</b> .....	31 X 12 X 26 IN
<b>WEIGHT(LB)</b> .....	45
<b>MAX TIRE WIDTH</b> .....	3" (WITH THULE XXL FATBIKE WHEEL STRAPS 4.7")
<b>MAX WHEEL SIZE (DIAMETER)</b> ....	29 IN
<b>MAX WHEELBASE</b> .....	1300 MM
<b>DISTANCE BETWEEN BIKES(IN)</b> ...	9
<b>TILT FUNCTION (WITH BIKES)</b> .....	YES
<b>FITS 1.25" RECEIVERS</b> .....	YES
<b>FITS 2" RECEIVERS</b> .....	YES
<b>ONE KEY SYSTEM COMPATIBLE</b> ....	YES
<b>BIKE LOCK INCLUDED</b> .....	YES
<b>RECEIVER LOCK INCLUDED</b> .....	YES
<b>COLOR</b> .....	BLACK
<b>MODEL NUMBER</b> .....	903202
<b>UPC-A</b> .....	091021183919



# Thule Helium Platform XT

**Model name:**                      **Model number:** 904011    **Price:** \$849.95

Premium aluminum platform bike rack is fully lockable, easy to use, and holds bikes without frame contact.



## FEATURES

Securely holds bikes in place without frame contact

Quickly attach bikes and easily secure them to the rack using the ratcheting wheel loops

Aluminum construction makes it easy to use, install and remove

Effortlessly fold down bike arms when rack is not in use

Convenient access to the rear of the vehicle using the HitchSwitch lever to tilt the rack down, even with bikes on it

Lock bikes to the rack using the integrated cable lock (lock included)

Fits 26"-29" wheel sizes up to a 3" wide tire

Quick to install and easy to lock the rack to the vehicle due to the tool-free, SnugTite stinger (lock included)



Aluminum - 1-bike  
903901

## TECHNICAL SPECIFICATIONS

<b>MAX NUMBER OF BIKES</b> .....	2
<b>LOAD CAPACITY(POUNDS)</b> .....	90
<b>MAX BIKE WEIGHT</b> .....	45
<b>DIMENSIONS (LXWXH)</b> .....	59.8 X 25.6 X 12 IN
<b>FOLDED DIMENSIONS</b> .....	12 X 59,7 X 25,6 IN
<b>WEIGHT(LB)</b> .....	43,2
<b>MAX TIRE WIDTH</b> .....	3.0 IN
<b>MAX WHEEL SIZE (DIAMETER)</b> ...	29 IN
<b>MAX WHEELBASE</b> .....	1320 MM
<b>DISTANCE BETWEEN BIKES(IN)</b> ...	10
<b>TILT FUNCTION (WITH BIKES)</b> .....	YES
<b>FITS 1.25" RECEIVERS</b> .....	YES
<b>FITS 2" RECEIVERS</b> .....	YES
<b>ONE KEY SYSTEM COMPATIBLE</b> ...	YES
<b>BIKE LOCK INCLUDED</b> .....	YES
<b>RECEIVER LOCK INCLUDED</b> .....	YES
<b>COLOR</b> .....	ALUMINUM
<b>MODEL NUMBER</b> .....	904011



# Future Product – Bike Carriers





# Thule T2 Pro XTR 2

**Model name:**                      **Model number:** 9034XTR **Price:** \$799.95

Thule T2 Pro XTR is a premium bike rack for demanding bike enthusiasts. With time-tested durability and award-winning design, this robust bike rack is ready for a wide variety of bike styles, including e-bikes.



## FEATURES

No frame contact

Integrated wheels help transport the rack to and from the vehicle

Tool-free AutoAttach system makes it quick and easy to install and remove the rack

Versatile design fits nearly all bikes, including e-bikes up to 60 lbs

HitchSwitch lever tilts up when not in use or tilts down for rear vehicle access without removing the rack

Integrated cable lock and lock knobs lock bikes to the rack and the rack to the receiver hitch

Adjustable spacing allows you to mount two bikes without interference

Fits 20" to 29" wheels and up to 5" tires, ideal for road, mountain, fat-tire, and e-bikes

Available for both 2" & 1.25" hitch sizes



Black - 1.25"  
9035XTR

## TECHNICAL SPECIFICATIONS

<b>MAX NUMBER OF BIKES</b> .....	2
<b>LOAD CAPACITY(POUNDS)</b> .....	120
<b>MAX BIKE WEIGHT</b> .....	60
<b>DIMENSIONS (LXWXH)</b> .....	54 X 43 X 15 IN
<b>FOLDED DIMENSIONS</b> .....	54,7 X 22,5 X 33,8 IN
<b>WEIGHT(LB)</b> .....	52,04
<b>MAX TIRE WIDTH</b> .....	5 IN
<b>MAX WHEEL SIZE (DIAMETER)</b> ....	29 IN
<b>MAX WHEELBASE</b> .....	1270 MM
<b>DISTANCE BETWEEN BIKES(IN)</b> ...	12.5
<b>TILT FUNCTION (WITH BIKES)</b> .....	YES
<b>FITS 1.25" RECEIVERS</b> .....	NO
<b>FITS 2" RECEIVERS</b> .....	YES
<b>ONE KEY SYSTEM COMPATIBLE</b> ...	YES
<b>BIKE LOCK INCLUDED</b> .....	YES
<b>RECEIVER LOCK INCLUDED</b> .....	YES
<b>COLOR</b> .....	BLACK
<b>MODEL NUMBER</b> .....	9034XTR



# Thule T2 Pro XT Add-On

**Model name:**                    **Model number:** 9036XTB **Price:** \$549.95

This add-on to our premium Thule T2 Pro XT platform hitch rack allows 4 bike capacity (2"/50mm receivers only).

## FEATURES

Lock bikes to the rack with the integrated cable lock

Eliminate bike interference by adjusting side to side to create generous spacing between bike mounts

Secure bikes quickly without frame contact with the frame-free ratcheting arm

Ideal for carbon frames, mountain, downhill, ebikes and fat bikes as it fits 20 - 29" wheels and up to 5" tires without adapters

Not for use with front fenders



## TECHNICAL SPECIFICATIONS

**MODEL NUMBER** ..... 9036XTB  
**UPC-A** ..... 091021667136  
**AMERICAS ARTICLE NUMBER** .... 9036XTB



# Thule T2 Pro X 2

**Model name:**                      **Model number:** 904450    **Price:** \$649.95

Easy to use hitch bike rack with frame-free clamping that works with all types of bikes.



## FEATURES

SnugTite Stinger positions the rack securely into the hitch receiver

The HitchSwitch lever allows you to tilt the rack down for rear vehicle access or tilt it up when not in use

Ratcheting arm and wheel tray secure bikes quickly without frame contact

Easily adjustable trays move side to side to create generous spacing between the bikes

Tool-free AutoAttach system makes it easy to install and remove the bike rack

Fits carbon frames, mountain bike, downhill bikes, 20 - 29" wheels, and up to 3" tires without adapters. Fat bike adapter kit sold separately

Includes the Thule One Key System to lock the rack to the vehicle



Black - Fits 1.2  
5" receivers  
904550

Maximum bike weight is 50 lbs / 23kg per bike



## TECHNICAL SPECIFICATIONS

<b>MAX NUMBER OF BIKES</b> .....	2
<b>LOAD CAPACITY(POUNDS)</b> .....	100
<b>MAX BIKE WEIGHT</b> .....	50
<b>DIMENSIONS (LXWXH)</b> .....	53 X 43 X 15 IN
<b>FOLDED DIMENSIONS</b> .....	53 X 22,5 X 33,8 IN
<b>WEIGHT(LB)</b> .....	50
<b>MAX TIRE WIDTH</b> .....	3
<b>MAX WHEEL SIZE (DIAMETER)</b> ....	29
<b>MAX WHEELBASE</b> .....	1245 MM
<b>DISTANCE BETWEEN BIKES(IN)</b> ...	12.5
<b>TILT FUNCTION (WITH BIKES)</b> .....	YES
<b>FITS 1.25" RECEIVERS</b> .....	NO
<b>FITS 2" RECEIVERS</b> .....	YES
<b>ONE KEY SYSTEM COMPATIBLE</b> ....	YES
<b>BIKE LOCK INCLUDED</b> .....	NO
<b>RECEIVER LOCK INCLUDED</b> .....	YES
<b>COLOR</b> .....	BLACK
<b>MODEL NUMBER</b> .....	904450

# Thule DoubleTrack Pro XT 2

**Model name:**                      **Model number:** 905402    **Price:** \$499.95

The flexible design fits more bikes than any other hitch rack in its price range.

## FEATURES

Fits nearly all bike styles including 16-29" wheels, up to 5" wide tires, and wheelbases up to 52" right out of the box

Adjusting, installing, and removing requires minimal effort, as it is one of the lightest platform hitch racks on the market at only 37.5 lbs

The HitchSwitch lever allows you to tilt the rack down for rear vehicle access or tilt it up when not in use

Lock the bikes to the rack and the rack to the receiver keeping everything safe during transport or when parked

Easily transfers between 1.25" and 2" hitch receivers



## TECHNICAL SPECIFICATIONS

<b>MAX NUMBER OF BIKES</b> .....	2
<b>LOAD CAPACITY(POUNDS)</b> .....	75
<b>MAX BIKE WEIGHT</b> .....	37,5
<b>DIMENSIONS (LXWXH)</b> .....	51 X 37.6 X 34.9 IN
<b>FOLDED DIMENSIONS</b> .....	51 X 15,5 X 32,7 IN
<b>WEIGHT(LB)</b> .....	37,5
<b>MAX TIRE WIDTH</b> .....	5 IN
<b>MAX WHEEL SIZE (DIAMETER)</b> ....	29 IN
<b>MAX WHEELBASE</b> .....	1320 MM
<b>DISTANCE BETWEEN BIKES(IN)</b> ...	10
<b>TILT FUNCTION (WITH BIKES)</b> .....	YES
<b>FITS 1.25" RECEIVERS</b> .....	YES
<b>FITS 2" RECEIVERS</b> .....	YES
<b>ONE KEY SYSTEM COMPATIBLE</b> ....	YES
<b>BIKE LOCK INCLUDED</b> .....	YES
<b>RECEIVER LOCK INCLUDED</b> .....	YES
<b>COLOR</b> .....	BLACK
<b>MODEL NUMBER</b> .....	905402





# Thule Helium Pro

**Model name:**                      **Model number:** 9043PRO **Price:** \$499.95

Lightweight aluminum hitch bike rack provides outstanding bike protection and easy-on, easy-off convenience.



## FEATURES

Super lightweight aluminum construction is half the weight of steel hitch bike racks, providing easy installation, removal, and handling

Unsurpassed hanging hitch carrier bike protection with industry-leading 7" spacing between bikes

Superior bike stability and fit with integrated anti-sway that prevent bike to bike contact and 'disappears' when not needed

Convenient access to rear of vehicle - HitchSwitch feature allows rack to be easily tilted down

Complete bike security with integrated cable lock (lock included)

Quick, secure and confidence inspiring bike attachment with ratchet strap cradle strap

Easily fold down bike arms when not in use with conveniently located HitchSwitch lever

Compact cradle design accommodates wide variety of bike sizes/frame styles

Fast, tool-free installation with SnugTite stinger design delivering maximum speed, stability and security (lock included)

Transferable between hitch receivers, fits 1.25" and 2" hitches



Aluminum - 2 bikes  
9042PRO

## TECHNICAL SPECIFICATIONS

<b>MAX NUMBER OF BIKES</b> .....	3
<b>LOAD CAPACITY(POUNDS)</b> .....	112,5
<b>MAX BIKE WEIGHT</b> .....	37,5
<b>DIMENSIONS (LXWXH)</b> .....	39 X 11 X 37,3 IN
<b>FOLDED DIMENSIONS</b> .....	21,9 X 11 X 37,3 IN
<b>WEIGHT(LB)</b> .....	20
<b>DISTANCE BETWEEN BIKES(IN)</b> ....	7
<b>TILT FUNCTION (WITH BIKES)</b> .....	NO
<b>FITS 1.25" RECEIVERS</b> .....	YES
<b>FITS 2" RECEIVERS</b> .....	YES
<b>ONE KEY SYSTEM COMPATIBLE</b> ....	YES
<b>BIKE LOCK INCLUDED</b> .....	YES
<b>RECEIVER LOCK INCLUDED</b> .....	YES
<b>COLOR</b> .....	ALUMINUM
<b>MODEL NUMBER</b> .....	9043PRO
<b>UPC-A</b> .....	091021905887
<b>AMERICAS ARTICLE NUMBER</b> .....	9043PRO

# Thule Apex XT Swing 4

**Model name:**                      **Model number:** 9027XT    **Price:** \$699.95

Premium hanging hitch bike rack providing superior bike protection and unobstructed access to the rear of vehicle.



## FEATURES

Superior bike stability and fit with integrated anti-sway that prevent bike to bike contact and 'disappears' when not needed

Bikes are safe and secure during transport thanks to 7" of spacing between each bike

Easily fold down bike arms when rack is not in use

Compact cradle design accommodates wide variety of bike sizes/frame styles

Lock bikes to the rack using the integrated cable lock (lock included)

Convenient access to the rear of the vehicle, even with bikes attached, due to the patented swing-away design

Quickly attach bikes and easily secure them to the rack using the ratcheting cradle strap

Quick to install and easy to lock the rack to the vehicle due to the tool-free, SnugTite stinger (lock included)

Easily opens and closes with the pull of a pin

## TECHNICAL SPECIFICATIONS

<b>MAX NUMBER OF BIKES</b> .....	4
<b>LOAD CAPACITY(POUNDS)</b> .....	150
<b>MAX BIKE WEIGHT</b> .....	37,5
<b>DIMENSIONS (LXWXH)</b> .....	42.2 X 11 X 40.2 IN
<b>FOLDED DIMENSIONS</b> .....	15,2 X 11 X 40,2 IN
<b>WEIGHT(LB)</b> .....	42
<b>DISTANCE BETWEEN BIKES(IN)</b> ....	7
<b>TILT FUNCTION (WITH BIKES)</b> .....	YES
<b>FITS 1,25" RECEIVERS</b> .....	NO
<b>FITS 2" RECEIVERS</b> .....	YES
<b>ONE KEY SYSTEM COMPATIBLE</b> ....	YES
<b>BIKE LOCK INCLUDED</b> .....	YES
<b>RECEIVER LOCK INCLUDED</b> .....	YES
<b>COLOR</b> .....	BLACK
<b>MODEL NUMBER</b> .....	9027XT
<b>UPC-A</b> .....	091021421332
<b>AMERICAS ARTICLE NUMBER</b> .....	9027XT



# Thule Apex XT

**Model name:**                      **Model number:** 9026XT    **Price:** \$479.95

Premium hanging hitch bike rack providing superior bike protection and multiple size options to fit the needs of two people or an entire family.



## FEATURES

Superior bike stability and fit with integrated anti-sway that prevent bike to bike contact and 'disappears' when not needed

Quickly attach bikes and easily secure them to the rack using the ratcheting cradle strap

Compact cradle design accommodates wide variety of bike sizes/frame styles

Lock bikes to the rack using the integrated cable lock (lock included)

Easily fold down bike arms when rack is not in use

Convenient access to the rear of the vehicle using the HitchSwitch lever to tilt the rack down

Easy to carry and handle, thanks to integrated grab handle

Quick to install and easy to lock the rack to the vehicle due to the tool-free, SnugTite stinger (lock included)

Easily transfers between 1.25" and 2" hitch receivers



Black - 4 bikes 9025XT    Black - 2 bikes 9024XT

## TECHNICAL SPECIFICATIONS

<b>MAX NUMBER OF BIKES</b> .....	5
<b>LOAD CAPACITY(POUNDS)</b> .....	150
<b>MAX BIKE WEIGHT</b> .....	37,5
<b>DIMENSIONS (LXWXH)</b> .....	42.1 X 11 X 37 IN
<b>FOLDED DIMENSIONS</b> .....	15,4 X 11 X 37 IN
<b>WEIGHT(LB)</b> .....	35
<b>DISTANCE BETWEEN BIKES(IN)</b> ....	5,5
<b>TILT FUNCTION (WITH BIKES)</b> .....	NO
<b>FITS 1.25" RECEIVERS</b> .....	YES
<b>FITS 2" RECEIVERS</b> .....	YES
<b>ONE KEY SYSTEM COMPATIBLE</b> ....	YES
<b>BIKE LOCK INCLUDED</b> .....	YES
<b>RECEIVER LOCK INCLUDED</b> .....	YES
<b>COLOR</b> .....	BLACK
<b>MODEL NUMBER</b> .....	9026XT
<b>UPC-A</b> .....	091021525900
<b>AMERICAS ARTICLE NUMBER</b> .....	9026XT

# Thule Camber

**Model name:**                      **Model number:** 905600    **Price:** \$379.95

For rides long or short, bring your bikes with ease.



## FEATURES

Superior bike stability and fit with integrated anti-sway that prevent bike to bike contact and 'disappears' when not needed

Bikes are safe and secure during transport thanks to 7" of spacing between each bike

Quickly attach bikes and easily secure them to the rack using the ratcheting cradle strap

Compact cradle design accommodates wide variety of bike sizes/frame styles

Effortlessly fold down bike arms when rack is not in use

Convenient access to the rear of the vehicle using the HitchSwitch lever to tilt the rack down

Easily transfers between 1.25" and 2" hitch receivers



Black - 2 bikes  
905800

## TECHNICAL SPECIFICATIONS

<b>MAX NUMBER OF BIKES</b> .....	4
<b>LOAD CAPACITY(POUNDS)</b> .....	150
<b>MAX BIKE WEIGHT</b> .....	37,5
<b>DIMENSIONS (LXWXH)</b> .....	42.2 X 11 X 35.6 IN
<b>FOLDED DIMENSIONS</b> .....	14,8 X 11 X 35,6 IN
<b>WEIGHT(LB)</b> .....	34
<b>DISTANCE BETWEEN BIKES(IN)</b> ....	7
<b>TILT FUNCTION (WITH BIKES)</b> .....	NO
<b>FITS 1.25" RECEIVERS</b> .....	YES
<b>FITS 2" RECEIVERS</b> .....	YES
<b>BIKE LOCK INCLUDED</b> .....	NO
<b>RECEIVER LOCK INCLUDED</b> .....	NO
<b>COLOR</b> .....	BLACK
<b>MODEL NUMBER</b> .....	9056
<b>UPC-A</b> .....	091021475946
<b>AMERICAS ARTICLE NUMBER</b> .....	905600





# Thule Range

**Model name:**                      **Model number:** 905700    **Price:** \$449.95

Specifically designed to handle the tremendous forces on the back of an RV/travel trailer, this carrier is durable, protective and secure.



## FEATURES

Superior bike stability and fit with integrated anti-sway that prevent bike to bike contact and 'disappears' when not needed

Bikes are safe and secure during transport thanks to 7" of spacing between each bike

Quickly attach bikes and easily secure them to the rack using the ratcheting cradle strap

Compact cradle design accommodates wide variety of bike sizes/frame styles

Lock bikes to the rack using the integrated cable lock (lock included)

Easily fold down bike arms when rack is not in use

Carrier locks to the RV with the Thule STL2 bolt (lock included)

## TECHNICAL SPECIFICATIONS

<b>MOUNTING LOCATION</b> .....	1168235
<b>LOAD CAPACITY BIKES</b> .....	4
<b>MAX BIKE WEIGHT</b> .....	37,5
<b>MAX WEIGHT CAPACITY(POUNDS)</b> ....	150
<b>FOR E-BIKES</b> .....	NO
<b>WEIGHT(LB)</b> .....	36
<b>UPC-A</b> .....	091021630741
<b>AMERICAS ARTICLE NUMBER</b> .....	905700
<b>MODEL NUMBER</b> .....	9057
<b>DIMENSIONS (LXWXH)</b> .....	42,1 X 11 X 35,6 IN
<b>FOLDED DIMENSIONS</b> .....	14,8 X 11 X 35,6 IN
<b>DISTANCE BETWEEN BIKES(IN)</b> .....	7
<b>TILT FUNCTION (WITH BIKES)</b> .....	NO
<b>FITS 1.25" RECEIVERS</b> .....	NO
<b>FITS 2" RECEIVERS</b> .....	YES
<b>ONE KEY SYSTEM COMPATIBLE</b> .....	YES
<b>BIKE LOCK INCLUDED</b> .....	YES

# Thule UpRide

**Model name:**                      **Model number:** 599000    **Price:** \$299.95

Thule UpRide is a universal upright bike rack for fast, secure mounting and no frame contact.

## FEATURES

No bike frame contact is made as the hook securely grabs the front wheel

Suitable for bikes with carbon frames

Versatile design accommodates bikes with non-traditional frame designs, rear suspension, and bottle cages

Simple interface for switching carrier from one side of your car to the other

Ratcheting wheel strap quickly secures back wheel to tray

Fits most 20-29" wheel bicycles with tires up to 3" wide (up to 5" with Thule UpRide Fatbike Adapter, sold separately)

Maximum bike weight up to 44 lb/20 kg.

Locks the bike to the bike rack and the bike rack to the vehicle (locks sold separately)



## TECHNICAL SPECIFICATIONS

<b>LOAD CAPACITY(POUNDS)</b> .....	44
<b>DIMENSIONS (LXWXH)</b> .....	64 X 13 X 4.3 IN
<b>WEIGHT(LB)</b> .....	17
<b>MAX TIRE WIDTH</b> .....	3 IN
<b>MAX WHEEL SIZE (DIAMETER)</b> .....	29 IN
<b>MAX WHEELBASE</b> .....	1300 MM
<b>FITS ROUND FRAME DIMENSIONS(MM)</b> ....	ALL
<b>FITS THULE WINGBAR EVO</b> .....	YES
<b>FITS THULE AEROBLADE</b> .....	YES
<b>ONE KEY SYSTEM COMPATIBLE</b> .....	YES
<b>COLOR</b> .....	BLACK/ALUMINIUM





# Thule ProRide XT

**Model name:**                      **Model number:** 598004    **Price:** \$259.95

Upright bike carrier for the quickest, most convenient mounting – for bikes up to 44 lbs.

## FEATURES

Automatically positions your bike when you secure it, thanks to the uniquely designed frame holder and wheel tray

Quick and easy bike securing – the torque limiter dial controls the force going into the bike frame with a clear sign of correct mounting

Improved mounting hardware fits most factory cross bar profiles

Pressure is spread via large, soft claw pads that adapt to your bike's frame tubes – minimizing the risk of frame damage

Safe mounting – your bike is prevented from falling thanks to the claw's extended lower jaw

Stable wheels – firmly fixed in smartly designed wheel holders with diagonal quick-release wheel straps

Easy, tool-free interface for switching carrier from one side of your car to the other.

Mounts to all Thule rack systems, round bars and most factory racks

2 One Key lock cylinders (sold separately) lock the bike to carrier and carrier to rack.



## TECHNICAL SPECIFICATIONS

<b>LOAD CAPACITY(POUNDS)</b> .....	44
<b>DIMENSIONS (LXWXH)</b> .....	58 X 13.5 X 4 IN
<b>WEIGHT(LB)</b> .....	11
<b>MAX TIRE WIDTH</b> .....	3 IN
<b>MAX WHEEL SIZE (DIAMETER)</b> .....	29 IN
<b>MAX WHEELBASE</b> .....	1235 MM
<b>FITS ROUND FRAME DIMENSIONS(MM)</b> .....	22-80 MM
<b>FITS THULE WINGBAR EVO</b> .....	YES
<b>FITS THULE AEROBLADE</b> .....	YES
<b>ONE KEY SYSTEM COMPATIBLE</b> .....	YES
<b>COLOR</b> .....	BLACK
<b>UPC-A</b> .....	091021753372

# Thule TopRide

**Model name:**                      **Model number:** 568005    **Price:** \$299.95

Premium fork mount roof bike rack for the bike enthusiast with fast and easy mounting for both Thru-axle and standard Quick-release bikes.

## FEATURES

Easily mount Thru-axle bikes (9-15mm) and standard Quick-release bikes (9 mm). Fits 20x110mm Thru-axle bikes with an additional adapter (sold separately)

Accommodates bikes with disc brakes

Fasten your bike to the fork adapter on the ground for easy mounting

The bike slides into the carrier on a guided track on the fork adapter and clicks into place

Convenient and easy installation of fork adapter for a secure bike fit

The fork mount rack is easy and safe to mount thanks to audible and visual confirmation of correct mounting

Unmount bikes from the rack easily with a release lever

Safe mounting of Quick-release bikes thanks to Thule AcuTight torque limiter knob that click when optimal torque is reached

Locks the bike to the bike rack and the bike rack to the roof racks (locks sold separately)

Easy to switch carrier position from one side of vehicle to the other



## TECHNICAL SPECIFICATIONS

<b>LOAD CAPACITY(POUNDS)</b> .....	40
<b>DIMENSIONS (LXWXH)</b> .....	55 X 8 X 6 IN
<b>WEIGHT(LB)</b> .....	7,7
<b>MAX TIRE WIDTH</b> .....	3 IN
<b>MAX WHEEL SIZE (DIAMETER)</b> .....	29 IN
<b>MAX WHEELBASE</b> .....	1250 MM
<b>FITS ROUND FRAME DIMENSIONS(MM)</b> ....	ALL
<b>CARBON FORK DROPOUT COMPATIBLE</b> ..	YES
<b>FITS THULE WINGBAR EVO</b> .....	YES
<b>FITS THULE AEROBLADE</b> .....	YES
<b>ONE KEY SYSTEM COMPATIBLE</b> .....	YES



# Thule FastRide

**Model name:**                      **Model number:** 564005    **Price:** \$229.95

Sleek and versatile fork-mounted bike rack that offers convenient transport for Quick-release bikes.

## FEATURES

Easily mount standard Quick-release bikes (9 mm). Fits Thru-axle bikes (9-15mm) and 20x110mm Thru-axle bikes with additional adapters (sold separately)

Accommodates bikes with disc brakes

Safe mounting of Quick-release bikes thanks to Thule AcuTight torque limiter knob that click when optimal torque is reached

Convenient and easy installation of fork adapter for a secure bike fit

The fork mount rack is easy and safe to mount thanks to audible confirmation of correct mounting

Locks the bike to the bike rack and the bike rack to the roof racks (locks sold separately)

Easy to switch carrier position from one side of vehicle to the other

Adjustable protective wheel strap holds the rear wheel securely in place

Mounts to all Thule rack systems, round bars and most factory racks



## TECHNICAL SPECIFICATIONS

<b>LOAD CAPACITY(POUNDS)</b> .....	40
<b>DIMENSIONS (LXWXH)</b> .....	53 X 9 X 4 IN
<b>WEIGHT(LB)</b> .....	7,28
<b>MAX TIRE WIDTH</b> .....	3 IN
<b>MAX WHEEL SIZE (DIAMETER)</b> .....	29 IN
<b>MAX WHEELBASE</b> .....	1250 MM
<b>FITS ROUND FRAME DIMENSIONS(MM)</b> ....	ALL
<b>CARBON FORK DROPOUT COMPATIBLE</b> ..	YES
<b>FITS THULE WINGBAR EVO</b> .....	YES
<b>FITS THULE AEROBLADE</b> .....	YES
<b>COLOR</b> .....	BLACK
<b>UPC-A</b> .....	091021077232





# Thule OutWay Platform 2

**Model name:**                      **Model number:** 993005    **Price:** \$499.95

Premium trunk mount bike carrier with raised platform designed to keep the rear lights and license plate visible, and fits wide range of vehicles including those with a spoiler.



## FEATURES

Maximum fastening security to your vehicle with steel cables

Quick and easy mounting to car thanks to simple user interface and intuitive torque limiting tightening system

Firm carrier hold and vehicle protection with twin hook attachment and rubber protection pads

Improved visibility of rear lights and license plate with raised platform design

Easy mounting of bikes with adjustable/removable bike arms and Thule AcuTight torque limiter knobs that click when optimal torque is reached

Accommodates up to 127cm/50" wheelbase bikes

Simple to fasten wheels, thanks to long wheel straps with pump buckles

Locks the bikes to the bike rack and the bike rack to the car (locks included)

Folds flat for easy transport and convenient storage

No assembly required

## TECHNICAL SPECIFICATIONS

<b>MAX NUMBER OF BIKES</b> .....	2
<b>LOAD CAPACITY(POUNDS)</b> .....	66
<b>MAX BIKE WEIGHT</b> .....	33
<b>DIMENSIONS (LXWXH)</b> .....	23 X 50 X 47 IN
<b>FOLDED DIMENSIONS</b> .....	9,4 X 30,7 X 21,3 IN
<b>WEIGHT(LB)</b> .....	27,6
<b>MAX TIRE WIDTH</b> .....	3 IN
<b>MAX WHEELBASE</b> .....	1270 MM
<b>REAR LIGHTS AND NUMBER PLATE VISIBLE WITH BIKES MOUNTED</b>	YES
<b>ONE KEY SYSTEM COMPATIBLE</b> .....	YES
<b>COLOR</b> .....	BLACK/ALUMINIUM
<b>UPC-A</b> .....	091021850163
<b>AMERICAS ARTICLE NUMBER</b> .....	993005
<b>MODEL NUMBER</b> .....	993005

# Thule OutWay Hanging 2&3

**Model name:**                      **Model number:** 994005    **Price:** \$429.95

Premium trunk mount bike carrier provides robust attachment and fits wide range of vehicles including those with a spoiler.



## FEATURES

Maximum fastening security to your vehicle with steel cables

Quick and easy mounting to car thanks to simple user interface and intuitive torque limiting tightening system

Firm carrier hold and vehicle protection with twin hook attachment and rubber protection pads

Bike protection and security with soft cradles that absorb road shock and vibrations

Vehicle and bike protection with integrated anti-sway system that prevents bike-to-bike and bike-to-vehicle contact

Accommodates a variety of bike frames/geometries including smaller kids bikes thanks to adjustable bike arms

Locks the bikes to the bike rack and the bike rack to the car (locks included)

Bike arms fold down when not in use, and rack folds flat for easy transport and convenient storage

Easy to assemble with included tools

Possible to open vehicle trunk without any mounted bikes



Black/Aluminium - 3 bikes  
995005

## TECHNICAL SPECIFICATIONS

<b>MAX NUMBER OF BIKES</b> .....	2
<b>LOAD CAPACITY(POUNDS)</b> .....	66
<b>MAX BIKE WEIGHT</b> .....	33
<b>DIMENSIONS (LXWXH)</b> .....	24.5 X 30.7 X 31 IN
<b>FOLDED DIMENSIONS</b> .....	9,4 X 30,7 X 20,9 IN
<b>WEIGHT(LB)</b> .....	18,3
<b>REAR LIGHTS AND NUMBER PLATE VISIBLE WITH BIKES MOUNTED</b> ·	NO
<b>ONE KEY SYSTEM COMPATIBLE</b> .....	YES
<b>COLOR</b> .....	BLACK/ALUMINIUM
<b>UPC-A</b> .....	091021480971
<b>AMERICAS ARTICLE NUMBER</b> .....	994005
<b>MODEL NUMBER</b> .....	994005



# Thule Gateway Pro

**Model name:**                      **Model number:** 900600    **Price:** \$299.95

Robust trunk bike rack securely holds bikes, is easy to use, and folds for compact storage.



## FEATURES

Secure fit with integrated anti-sway cradles that prevent bike to bike contact

Locks to the car with optional Thule Lock Strap (Sold separately)

7" of spacing between the bikes prevents contact during transport

Quickly attach bikes and easily secure them to the rack using the ratcheting cradle strap

Compact cradle design accommodates wide variety of bike sizes and frame styles

Bike rack arms independently adjust to fit a wide variety of bikes and fold down when not in use

Access straps can be tucked away to protect the vehicle finish

Folds up flat for convenient storage

Locks the bikes to the bike rack with integrated cable lock



Black - 3 bikes  
900700

## TECHNICAL SPECIFICATIONS

<b>MAX NUMBER OF BIKES</b> .....	2
<b>LOAD CAPACITY(POUNDS)</b> .....	70
<b>MAX BIKE WEIGHT</b> .....	35
<b>DIMENSIONS (LXWXH)</b> .....	23,5 X 18 X 33 IN
<b>FOLDED DIMENSIONS</b> .....	23,5 X 18 X 21 IN
<b>WEIGHT(LB)</b> .....	13,7
<b>ONE KEY SYSTEM COMPATIBLE</b> .....	YES
<b>COLOR</b> .....	BLACK
<b>UPC-A</b> .....	091021885103
<b>AMERICAS ARTICLE NUMBER</b> .....	900600
<b>MODEL NUMBER</b> .....	900600





# Thule Passage

**Model name:**                      **Model number:** 910XT      **Price:** \$199.95

## FEATURES

Soft rubber cradles protect bike frame while holding it securely

Bike rack arms can fold down when not in use

Narrow cradle arms hold a wider range of bike frames including smaller child frames

Car protection with soft cushioned pads against vehicle

Bike-to-bike and bike-to-vehicle contact prevented by no-sway cages

Protects the vehicle with vinyl-coated buckles that provide a firm hold

See Thule Buyer's Guide for recommended fits



Black - 3 Bike  
911XT

## TECHNICAL SPECIFICATIONS

<b>MAX NUMBER OF BIKES</b> .....	2
<b>LOAD CAPACITY(POUNDS)</b> .....	70
<b>MAX BIKE WEIGHT</b> .....	35
<b>DIMENSIONS (LXWXH)</b> .....	22 X 17 X 34 IN
<b>FOLDED DIMENSIONS</b> .....	22 X 17 X 24 IN
<b>WEIGHT(LB)</b> .....	9,7
<b>REAR LIGHTS AND NUMBER PLATE VISIBLE WITH BIKES MOUNTED</b> ·	NO
<b>ONE KEY SYSTEM COMPATIBLE</b> .....	NO
<b>COLOR</b> .....	BLACK
<b>UPC-A</b> .....	091021569089
<b>AMERICAS ARTICLE NUMBER</b> .....	910XT
<b>MODEL NUMBER</b> .....	910XT



# Thule Insta-Gater Pro

**Model name:**                      **Model number:** 501501      **Price:** \$319.95

Fully adjustable, upright bike carrier designed for the inside of the truck bed.

## FEATURES

Quickly secure the bike without frame contact using the ratcheting arm

Ideal for carbon frames, mountain, downhill, ebikes and fat bikes

Accommodates wheel sizes from 20 - 29" and up to 5" tire

Lock bike to rack using Thule's One-Key system (lock included)

Holds 1 bike up to 50lbs

Fits all pickup tailgates

No bolting or drilling required



## TECHNICAL SPECIFICATIONS

<b>MAX NUMBER OF BIKES</b> .....	1
<b>DIMENSIONS (LXWXH)</b> .....	40.6 X 18 X 6.7 IN
<b>WEIGHT(LB)</b> .....	11
<b>MAX TIRE WIDTH</b> .....	5 IN
<b>MAX WHEEL SIZE (DIAMETER)</b> ....	29 IN
<b>ONE KEY SYSTEM COMPATIBLE</b> ....	YES
<b>MODEL NUMBER</b> .....	501501



# Thule GateMate PRO

**Model name:**                      **Model number:** 823PRO    **Price:** \$209.95

Protect both your bikes and your pick-up on your next adventure with heavy-duty, adjustable padded protection.

## FEATURES

Flexible padding adjusts across a wide range of tailgates and large handle opening provides backup camera visibility

Bikes remain securely in place with integrated bike separation and multiple position strap anchors

Bikes and pick-up trucks are protected during transport with heavy duty vinyl, adjustable padding

Gear can be stored securely, even while driving, due to the inside facing mesh pockets



Black - L  
824PRO

## TECHNICAL SPECIFICATIONS

- MAX NUMBER OF BIKES** ..... 7
- DIMENSIONS (LXWXH)** ..... 52 X 15.5 X 2.75 IN
- WEIGHT(LB)** ..... 5,5
- MODEL NUMBER** ..... 823PRO





# Thule Bed Rider Pro

**Model name:**                      **Model number:** 822101      **Price:** \$329.95

A robust locking fork-mount rack to carry bikes in the bed of a pick-up truck with no bolting or drilling (for 2 bikes).

## FEATURES

Thule Evo Fixpoint foot easily and securely attaches to standard pickup truck bed rail without drilling

Capacity to transport bikes with 9mm quick release forks and thru axle diameters 12x100, 12x110, 15x100, 15x110 via existing 9mm skewer and new thru axle adapters

Bike weight capacity of 40lbs / 18.1kg per bike

Fits two bikes out of the box, up to three with add-on fork mount (sold separately)

Clears all disc brakes calipers

Fork block able to mount to square bar (around the bar), standard Thule t-slot, and flat surfaces (custom mount applications)

Rack locks to vehicle (locks included) and bikes lock via 538XT cable lock accessory (sold separately)

Some consumer assembly required



Black - Full Size  
822102

## TECHNICAL SPECIFICATIONS

<b>MAX NUMBER OF BIKES</b> .....	2
<b>DIMENSIONS (LXWXH)</b> .....	68 X 6 X 9 IN
<b>WEIGHT(LB)</b> .....	13,9
<b>ONE KEY SYSTEM COMPATIBLE</b> ....	YES
<b>MODEL NUMBER</b> .....	822101



# Thule Bed Rider Pro Add-On Block

**Model name:**                      **Model number:** 822103    **Price:** \$59.95

Attaches to Thule Bed Rider Pro (sold separately) to increase bike carrying capacity.

## FEATURES

Capacity to transport bikes with 9mm quick release forks and thru axle diameters 12x100, 12x110, 15x100, 15x110 via existing 9mm skewer and new thru axle adapters

Bikes lock via 538XT cable lock accessory (sold separately)

Clears all disc brakes calipers



## TECHNICAL SPECIFICATIONS

**MAX NUMBER OF BIKES** ..... 1  
**DIMENSIONS (LXWXH)** ..... 6 X 3 X 3 IN  
**WEIGHT(LB)** ..... 0,9  
**MODEL NUMBER** ..... 822103

# Thule Low Rider Pro

**Model name:**                      **Model number:** 821101      **Price:** \$59.95

Create your own custom carrying solutions with this versatile fork-mount block.

## FEATURES

Capacity to transport bikes with 9mm quick release forks and thru axle diameters 12x100, 12x110, 15x100, 15x110 via existing 9mm skewer and new thru axle adapters

Bike weight capacity of 40lbs / 18.1kg per bike

Fork block able to mount to flat surfaces (custom mount applications)

Clears all disc brakes calipers



## TECHNICAL SPECIFICATIONS

- MAX NUMBER OF BIKES** ..... 1
- DIMENSIONS (LXWXH)** ..... 6 X 3 X 3 IN
- WEIGHT(LB)** ..... 1
- ONE KEY SYSTEM COMPATIBLE** .... NO
- MODEL NUMBER** ..... 821101





# Thule License Plate Holder

**Model name:**                    **Model number:** 903760    **Price:** \$49.95

Easily mount your license plate to platform and hanging hitch bike carriers.

## FEATURES

Provides unobstructed view of vehicle tag for improved visibility

Versatile attachment straps can be secured to both horizontal and vertical surfaces (rack or bike)

Integrated light for night time plate visibility conforms to FMVSS108 safety standards and includes universal four pin connector with quick connection

Easily rotate holder on carrier for use in 'stowed' or 'in-use' position

Captured attachment mechanism inhibits tampering of license plate



## TECHNICAL SPECIFICATIONS

**MODEL NUMBER** ..... 903760  
**UPC-A** ..... 091021460461  
**AMERICAS ARTICLE NUMBER** .... 903760



# Thule Hitch Extender

**Model name:** **Model number:** 903750 **Price:** \$79.95

Provides clearance for spare tires, barn doors and tailgates when using a hitch bike carrier.

## FEATURES

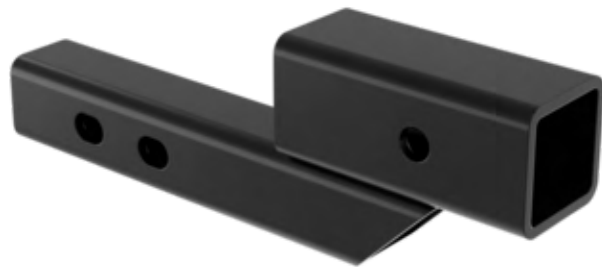
Two position extension, 7" and 9", clears spare tires and allows for use of platform and hanging hitch carriers

250 lbs weight limit carrying capacity

Provides a 2.25" drop for improved tailgate/rear door clearance

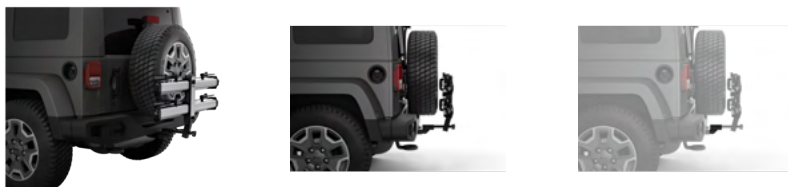
Bolt fixation to vehicle

Accommodates hitch rack bike carriers with a 2" stinger (Not for towed use)



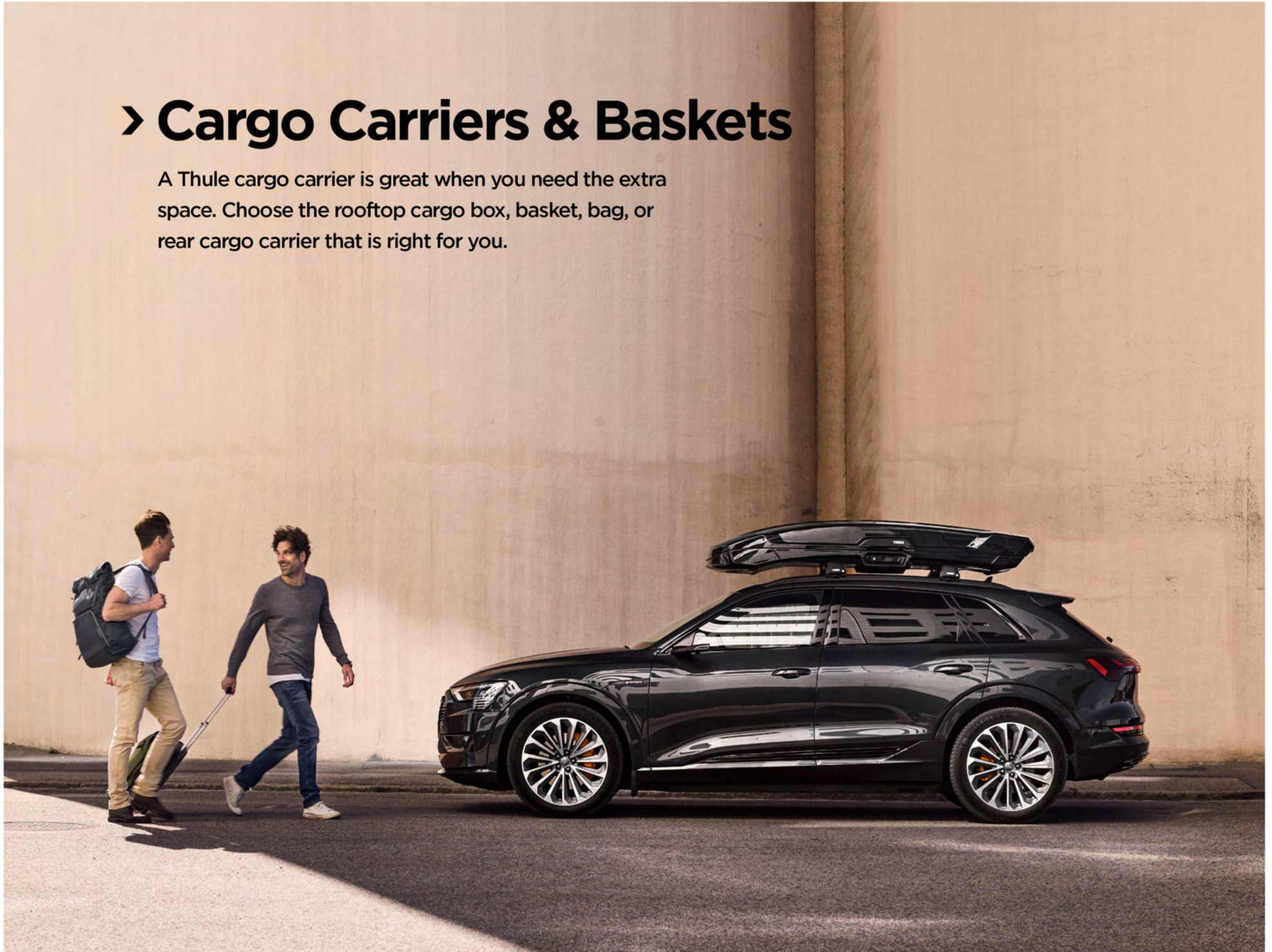
## TECHNICAL SPECIFICATIONS

**MODEL NUMBER** ..... 903750  
**UPC-A** ..... 091021249844  
**AMERICAS ARTICLE NUMBER** .... 903750



## › Cargo Carriers & Baskets

A Thule cargo carrier is great when you need the extra space. Choose the rooftop cargo box, basket, bag, or rear cargo carrier that is right for you.





New



## ➤ Thule Arcos

### The rear cargo box with modern design and great aerodynamics

Thule Arcos gives you plenty of loading space at the rear of your car, keeping the roof free to reduce wind resistance or to carry other loads. The design of Thule Arcos is modern and streamlined, with an aerodynamic wing shape that makes it feel like a natural extension of the vehicle.

### Easy to mount, easy to use

The cargo box sits low to the ground, making it easy to load and unload cargo. At the same time, its low profile and shape allow you to access the trunk of your car at any time. The durable hard-shell exterior protects your load from dirt and water. Designed for easy mounting, handling, and cleaning, Thule Arcos is a great companion for both everyday life and adventures.

*Please note: The Thule Arcos Box must be used together with the Thule Arcos Platform.*





# Thule Vector

**Model name:**                      **Model number:** 613201    **Price:** \$1,999.95

A cargo box like no other that perfectly pairs performance styling with premium features.

## FEATURES

An elegant, sporty design with seamless integration of the lid and the base that adds a distinctive look to any car

A premium interior with integrated lighting and a felt-lined base for increased gear protection that enhances the user experience

Reinforced lid makes for a smooth, effortless dual-sided opening and closing

A white-colored interior of the lid combined with a LED-light facilitates loading and unloading at night

SlideLock system with separate locking and opening functions that automatically locks the lid in place and shows when the box is closed securely

Easy to mount thanks to the PowerClick quick-mount system. The integrated torque indicator clicks when it's properly mounted, ensuring fast and secure fitting

Full trunk access with minimal risk of contact with the cargo box, thanks to its forward position on the vehicle roof

Including Thule Box Lid Cover to protect the box from scratches and dust during storage



Black Metallic  
- Alpine  
613501



## TECHNICAL SPECIFICATIONS

<b>VOLUME(CU)</b> .....	13
<b>EXTERNAL DIMENSIONS (LXWXH)</b> ....	83,5 X 34,5 X 14 IN
<b>INTERNAL DIMENSIONS (LXWXH)</b> ....	73,2 X 25 X 11,6 IN
<b>HEIGHT OFF CROSSBAR(IN)</b> .....	14
<b>LOAD CAPACITY(POUNDS)</b> .....	165
<b>MOUNTING SYSTEM</b> .....	POWERCLICK
<b>BOX OPENING</b> .....	1166314
<b>WEIGHT(LB)</b> .....	59,3
<b>LOCKING SYSTEM</b> .....	1166657
<b>LOCKS INCLUDED</b> .....	YES
<b>ONE KEY SYSTEM COMPATIBLE</b> .....	YES
<b>LOAD CAPACITY SKIS (PAIRS)</b> .....	3-5
<b>LOAD CAPACITY SNOWBOARDS</b> .....	3-4
<b>MAX LENGTH OF SKIS(CM)</b> .....	185 CM
<b>FITS THULE WINGBAR EVO</b> .....	YES
<b>FITS THULE AEROBLADE</b> .....	YES
<b>COLOR</b> .....	BLACK METALLIC
<b>MODEL NUMBER</b> .....	613201



# Thule Motion XT

**Model name:**                      **Model number:** 629706    **Price:** \$1,049.95

Stylish and spacious roof-mounted cargo box, optimized for ease of use.



## FEATURES

Optimized design for best space efficiency, aerodynamics, and vehicle fit

Easy to mount thanks to the extra wide PowerClick quick-mount system. The integrated torque indicator "clicks" when it's properly mounted, ensuring fast and secure fitting

Easy to open and close in all conditions due to grip-friendly outer handles and supporting lid-lifters

SlideLock system with separate locking and opening functions, automatically locks the lid in place and indicates when the box is closed securely

Full trunk access with minimal risk of contact with the cargo box, thanks to its forward position on the vehicle roof



Titan Glossy - L	Black Glossy - XL	Titan Glossy - XL	Black Glossy - XXL	Titan Glossy - XXL	Black Glossy - Alpine
629707	629806	629807	629906	629907	629506

## TECHNICAL SPECIFICATIONS

<b>VOLUME(CU)</b> .....	16
<b>EXTERNAL DIMENSIONS (LXWXH)</b> ....	77 X 36 X 17 IN
<b>INTERNAL DIMENSIONS (LXWXH)</b> ....	69 X 31,5 X 15 IN
<b>HEIGHT OFF CROSSBAR(IN)</b> .....	15,5
<b>LOAD CAPACITY(POUNDS)</b> .....	165
<b>MOUNTING SYSTEM</b> .....	POWERCLICK
<b>BOX OPENING</b> .....	1166314
<b>WEIGHT(LB)</b> .....	42
<b>LOCKING SYSTEM</b> .....	1166657
<b>LOCKS INCLUDED</b> .....	YES
<b>ONE KEY SYSTEM COMPATIBLE</b> .....	YES
<b>LOAD CAPACITY SKIS (PAIRS)</b> .....	5-7
<b>LOAD CAPACITY SNOWBOARDS</b> .....	3-5
<b>MAX LENGTH OF SKIS(CM)</b> .....	175 CM
<b>FITS THULE WINGBAR EVO</b> .....	YES
<b>FITS THULE AEROBLADE</b> .....	YES
<b>COLOR</b> .....	BLACK GLOSSY
<b>MODEL NUMBER</b> .....	629706



# Thule Force XT

**Model name:**                      **Model number:** 635601    **Price:** \$849.95

Versatile roof-mounted cargo box for everyday use.



## FEATURES

Maximum space efficiency across a wide range of vehicle fits

Easy to mount thanks to the PowerClick quick-mount system. The integrated torque indicator clicks when it's properly mounted, ensuring fast and secure fitting

Comfortable to open and close thanks to the LockKnob that also helps to prevent damage to the Thule Comfort Key

DualSide opening provides easy access to all areas of the box, from either side of the vehicle

Full trunk access with minimal risk of contact with the cargo box, thanks to its forward position on the vehicle roof



Black Matte - L                      Black Matte - XL                      Black Matte - XXL  
635701                      635801                      635901

## TECHNICAL SPECIFICATIONS

<b>VOLUME(CU)</b> .....	11
<b>EXTERNAL DIMENSIONS (LXWXH)</b> ....	74.75 X 24.75 X 16.75 IN
<b>INTERNAL DIMENSIONS (LXWXH)</b> ....	70,5 X 20,5 X 14,75 IN
<b>HEIGHT OFF CROSSBAR(IN)</b> .....	15,6
<b>LOAD CAPACITY(POUNDS)</b> .....	165
<b>MOUNTING SYSTEM</b> .....	POWERCLICK
<b>BOX OPENING</b> .....	1166314
<b>WEIGHT(LB)</b> .....	32
<b>LOCKING SYSTEM</b> .....	1166656
<b>LOCKS INCLUDED</b> .....	YES
<b>ONE KEY SYSTEM COMPATIBLE</b> .....	YES
<b>LOAD CAPACITY SKIS (PAIRS)</b> .....	3-5
<b>LOAD CAPACITY SNOWBOARDS</b> .....	3-4
<b>MAX LENGTH OF SKIS(CM)</b> .....	175 CM
<b>FITS THULE WINGBAR EVO</b> .....	YES
<b>FITS THULE AEROBLADE</b> .....	YES
<b>COLOR</b> .....	BLACK MATTE
<b>MODEL NUMBER</b> .....	635601

# Thule Force XT Limited Edition

**Model name:**                      **Model number:** 735801    **Price:** \$0.00

Versatile roof-mounted cargo box for everyday use.



## FEATURES

Maximum space efficiency across a wide range of vehicle fits

Easy to mount thanks to the PowerClick quick-mount system. The integrated torque indicator clicks when it's properly mounted, ensuring fast and secure fitting

Comfortable to open and close thanks to the LockKnob that also helps to prevent damage to the Thule Comfort Key

DualSide opening provides easy access to all areas of the box, from either side of the vehicle

Full trunk access with minimal risk of contact with the cargo box, thanks to its forward position on the vehicle roof

## TECHNICAL SPECIFICATIONS

VOLUME(CU) .....	18
EXTERNAL DIMENSIONS (LXWXH) ....	82.75 X 33.75 X 17.25 IN
INTERNAL DIMENSIONS (LXWXH) ....	77,5 X 29,5 X 15,25 IN
HEIGHT OFF CROSSBAR(IN) .....	16,1
LOAD CAPACITY(POUNDS) .....	165
MOUNTING SYSTEM .....	POWERCLICK
BOX OPENING .....	1166314
WEIGHT(LB) .....	47
LOCKING SYSTEM .....	1166656
LOCKS INCLUDED .....	YES
ONE KEY SYSTEM COMPATIBLE .....	YES
LOAD CAPACITY SKIS (PAIRS) .....	5-7
LOAD CAPACITY SNOWBOARDS .....	3-5
MAX LENGTH OF SKIS(CM) .....	195 CM
FITS THULE WINGBAR EVO .....	YES
FITS THULE AEROBLADE .....	YES
COLOR .....	BLACK MATTE
MODEL NUMBER .....	735801



# Thule Pulse

**Model name:**                      **Model number:** 616100    **Price:** \$649.95

Functional, great-value roof box for the extra space you need.

## FEATURES

Rugged and durable design is long-lasting and keeps contents protected during transit

Fast and secure fitting using only one hand due to FastGrip quick-mount system that assembles in moments

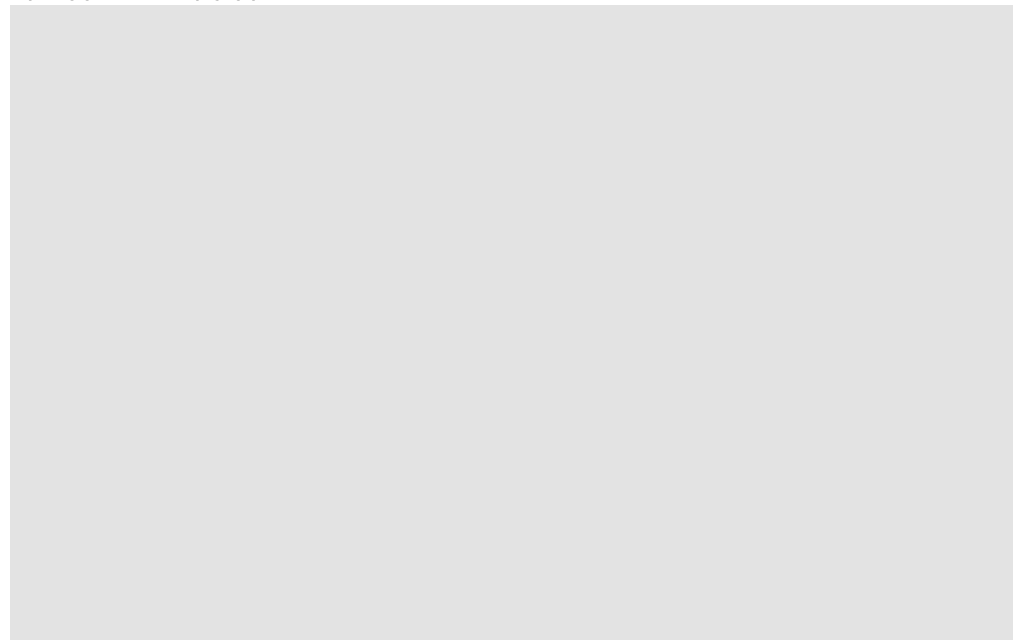
Passenger-side opening for easier loading and unloading

CentralLocking system provides maximum safety. The grip-friendly Thule Comfort key can only be removed if all locking points are securely closed



Black - M  
614100

Black - L  
615100



# Thule Sidekick

**Model name:**                      **Model number:** 682100    **Price:** \$499.95

Compact roof box, ideal for small loads such as camping gear or golf clubs.

## FEATURES

Space-saving design carries the load with room for other items on roof rack

Sturdy U-bolts with reinforcement plates mount cargo box securely to the rack

Passenger-side opening for easier loading and unloading



## TECHNICAL SPECIFICATIONS

VOLUME(CU) .....	8
EXTERNAL DIMENSIONS (LXWXH) ....	54 X 25 X 15.5 IN
INTERNAL DIMENSIONS (LXWXH) ....	48 X 23 X 13,5 IN
HEIGHT OFF CROSSBAR(IN) .....	15,5
LOAD CAPACITY(POUNDS) .....	75
MOUNTING SYSTEM .....	U-BOLT
BOX OPENING .....	1166318
WEIGHT(LB) .....	19,845
LOCKING SYSTEM .....	1166655
LOCKS INCLUDED .....	YES
ONE KEY SYSTEM COMPATIBLE .....	NO
LOAD CAPACITY SKIS (PAIRS) .....	N/A
LOAD CAPACITY SNOWBOARDS .....	N/A
MAX LENGTH OF SKIS(CM) .....	N/A
FITS THULE WINGBAR EVO .....	YES
FITS THULE AEROBLADE .....	YES

# Thule Interstate

**Model name:** **Model number:** 869001 **Price:** \$299.95

Durable, highly weather-resistant cargo bag with space for a family's gear.

## FEATURES

Ultra-high protection against the weather due to IP-X3 test-certified weather resistance

Durable and long-lasting with a lower environmental impact, thanks to double-coated, phthalate-free TPE laminate material

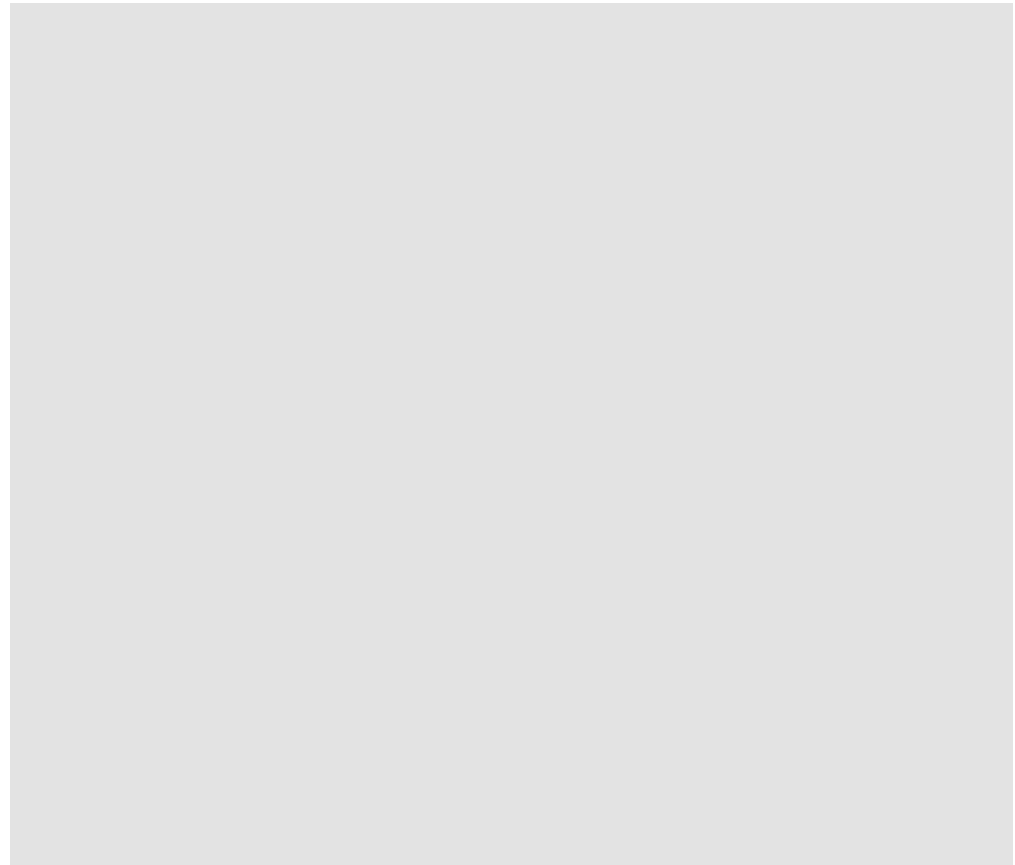
Padded base protects vehicle finish from abrasion

Easy, weather-protected access to gear via the coated, 3-sided zipper with generous storm flap

Cargo securely positioned with minimal friction and noise while in transit, thanks to twin compression straps

Bag is attached to roof rack crossbars or raised rails using heavy-duty, double-stitched webbing straps (included)

Easy and compact storage



# Thule Outbound

---

**Model name:**                      **Model number:** 868000    **Price:** \$169.95

---

Easy-to-use, weather-resistant cargo bag that can carry a full load of gear.

## FEATURES

Keeps your gear dry longer, thanks to IP-X2 test-certified weather resistance

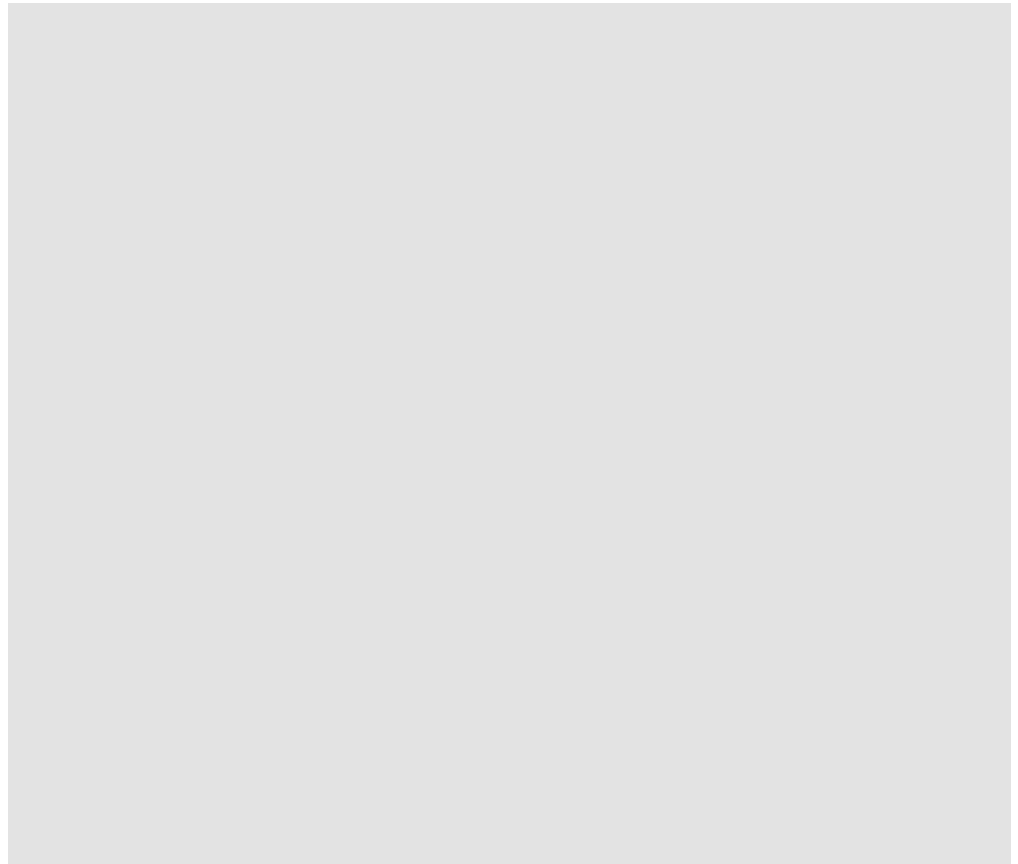
Durable and long-lasting with a lower environmental impact, thanks to double-coated, phthalate-free TPE laminate material

Easy, weather-protected access to gear via the coated, 3-sided zipper with generous storm flap

Cargo securely positioned with minimal friction and noise while in transit, thanks to twin compression straps

Bag is attached to roof rack crossbars or raised rails using heavy-duty, double-stitched webbing straps (included)

Easy and compact storage





**THULE**<sup>®</sup>  
SWEDEN

## › Racks & Carriers



**Bring your life**  
thule.com





## › Thule Caprock

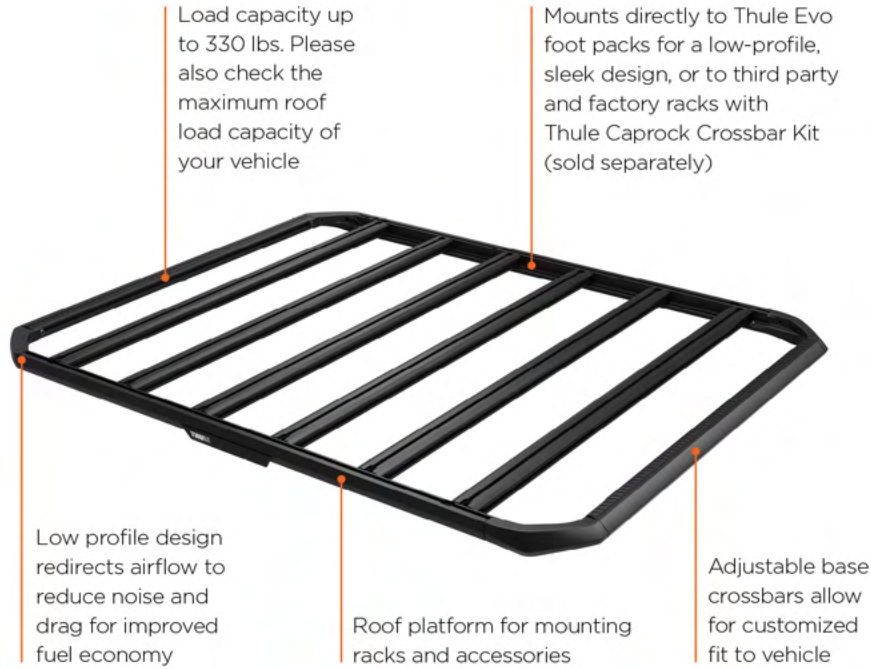
**A rugged yet stylish roof platform designed to support all your adventures**

Transform the roof of your vehicle into the foundation for adventure with the Thule Caprock roof platform. With its modular design and endless possibilities for attaching a rooftop tent or accessories, this sleek roof platform will support all your gear and mounts to a host of vehicle types, with or without crossbars.





New



# Thule Caprock

A rugged yet stylish roof platform designed to support all your adventures

## Heavy load capacity

Heavy-duty roof platform rack that lets your vehicle carry bulky cargo with ease. The platform is designed to fit common roof rack systems and provides several mounting options with integrated T-slots.



## Versatile design

Mount various Thule rack products, a rooftop tent or accessories for overlanding, camping, and more into the integrated track system and base crossbars.



## Available in multiple sizes

The roof platform comes in multiple sizes to accommodate varying roof dimensions, truck bed sizes, and intended use scenarios.



## Accessories

### Thule Caprock Railing Kit

Adjustable railing kit quickly transforms your Thule Caprock cargo platform into a versatile cargo basket.



### Thule Caprock Crossbar Kit

Crossbar adapter allows you to easily attach the Thule Caprock roof platform to existing crossbar systems.



### Thule Caprock Xsporter Pro Kit

Directly mount to the uprights of your Thule Xsporter truck rack for a low-profile, integrated platform.



## TECHNICAL SPECIFICATIONS

### THULE NUMBER

611001 / 611002 / 611003 / 611004 / 611015 / 611005/ 611006

611201 Thule Caprock Railing Kit S  
611202 Thule Caprock Railing Kit M  
611203 Thule Caprock Railing Kit L  
611204 Thule Caprock Railing Kit XL  
611208 Thule Caprock Railing Kit TB S  
611205 Thule Caprock Railing Kit TB L  
611206 Thule Caprock Railing Kit XXL

611300 Thule Caprock Crossbar Kit  
611310 Thule Caprock Xsporter Pro Kit

### PRODUCT DIMS (L x W)

52.4 x 59.1 in (Thule Caprock S)  
59.1 x 59.1 in (Thule Caprock M)  
59.1 x 74.8 in (Thule Caprock L)

65 x 59.1 in (Thule Caprock XL)  
74.8 x 59.1 in (Thule Caprock TB S)  
74.8 x 74.8 in (Thule Caprock TB L)  
65 x 82.7 in (Thule Caprock XXL)

### PRODUCT WEIGHT

51 lbs (Thule Caprock S)  
57 lbs (Thule Caprock M)  
54 lbs (Thule Caprock L)  
57 lbs (Thule Caprock XL)  
70 lbs (Thule Caprock TB S)  
80 lbs (Thule Caprock TB L)  
63 lbs (Thule Caprock XXL)

### COLORWAYS

Black



### COMMERCIAL AVAILABILITY

April, 2023

New



**611001 - Thule Caprock S**  
52.4 x 59.1 in - 51 lbs



**611002 - Thule Caprock M**  
59.1 x 59.1 in - 57 lbs



**611004 - Thule Caprock XL**  
65 x 59.1 in - 57 lbs



**611015 - Thule Caprock TB S**  
74.8 x 59.1 in - 70 lbs



**611003 - Thule Caprock L**  
59.1 x 74.8 in - 54 lbs



**611006 - Thule Caprock XXL**  
65 x 82.7 in - 63 lbs



**611005 - Thule Caprock TB L**  
74.8 x 74.8 in - 80 lbs

## > Thule Caprock

A rugged yet stylish roof platform designed to support all your adventures



# Thule Caprock

**Model name:**                      **Model number:** 611001      **Price:** \$1,099.95

Transform the roof of your vehicle into the foundation for adventure with the Thule Caprock roof platform. With its modular design and endless possibilities for attaching a rooftop tent or accessories, this sleek roof platform will support all your gear and mounts to a host of vehicle types, with or without crossbars.



## FEATURES

Roof platform for mounting racks and accessories

Low profile design redirects airflow to reduce noise and drag for improved fuel economy

Load capacity up to 330 lbs / 150 kg. Please also check the maximum roof load capacity of your vehicle

Mounts directly to Thule Evo foot packs for a low-profile, sleek design, or to third party and factory racks with Thule Caprock Crossbar Kit (sold separately)

Adjustable base crossbars allow for customized fit to vehicle

Extend use of platform by adding Thule rack products to integrated T-slots on upper, front, and rear sections of crossbars

Versatile design allows for easy mounting of popular overlanding accessories like light bars, jacks, and other gear

Easily converts to cargo basket by adding side railings using Thule Caprock Railing Kit (sold separately)

Converts to a cargo basket by adding side railings using Thule Caprock Railing Kit (sold separately)



Black - M  
611002

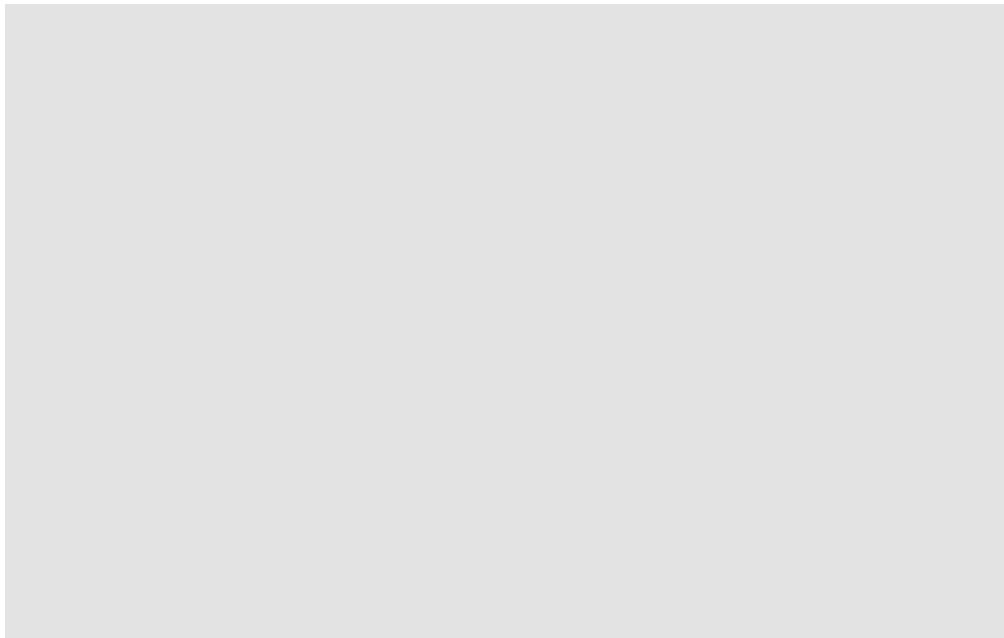
Black - L  
611003

Black - XL  
611004

Black - XXL  
611006

Black  
611015

Black - TB  
611005



# Thule Caprock Railing Kit

**Model name:**                      **Model number:** 611201      **Price:** \$469.95

Adjustable railing kit quickly transforms your Thule Caprock roof platform into a versatile cargo basket.

## FEATURES

Side rails provide a barrier to keep gear such as bags, coolers and containers secure within the perimeter of the platform

Each side rail attaches and detaches independently, allowing you to create different configurations depending on what you would like to carry

Railings include full-size t-slot grooves to provide additional tie-down points to secure your gear

Includes four railings that easily install to your Thule Caprock roof platform



Aluminum - M  
611202

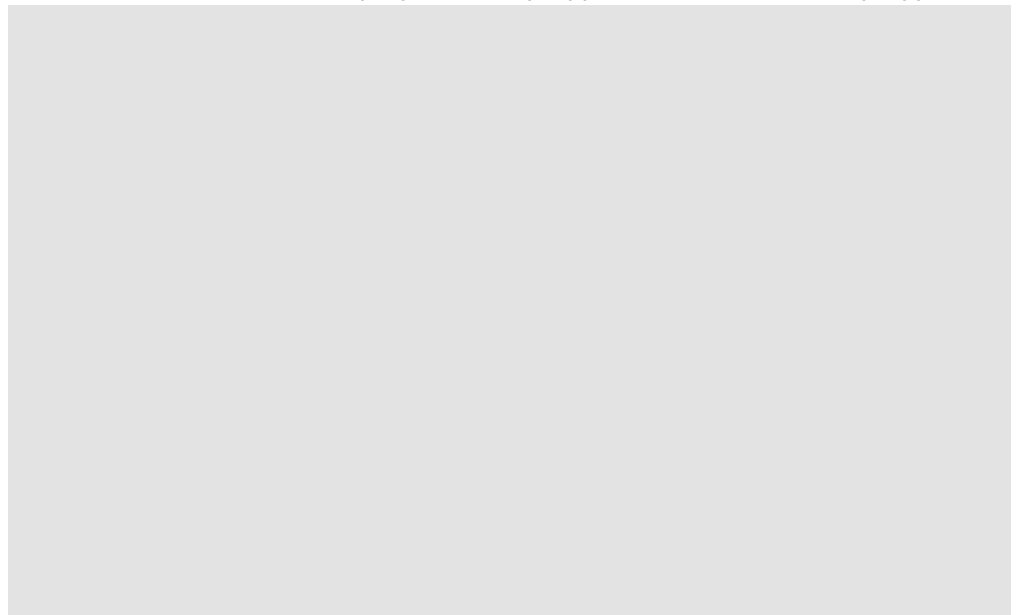
Aluminum - L  
611203

Aluminum - X  
L  
611204

Aluminum - X  
XL  
611206

Aluminum  
611208

Aluminum - T  
B  
611205



# Thule Caprock Xsporter Kit

---

**Model name:**                      **Model number:** 611310      **Price:** \$59.95

---

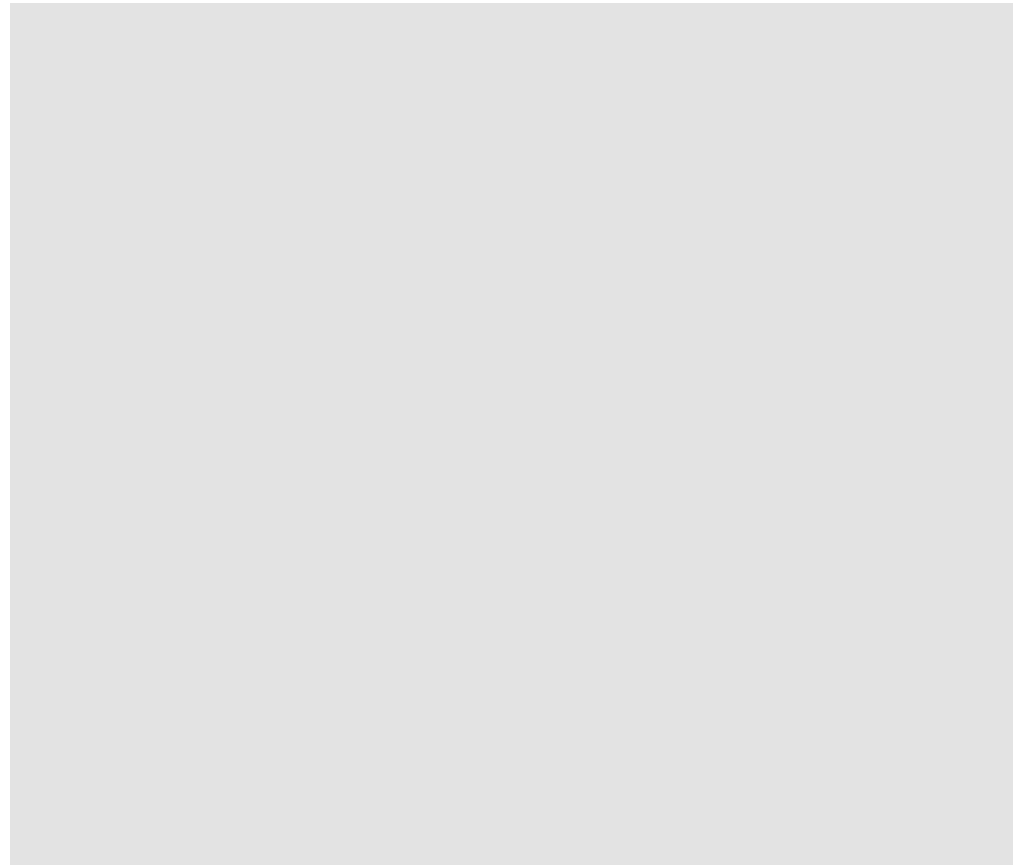
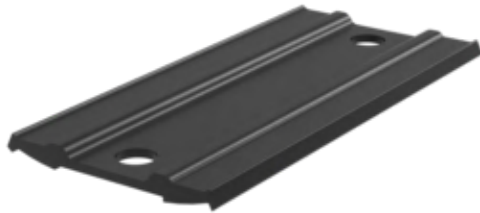
Directly mount to the uprights of your Thule Xsporter Pro truck rack for a low-profile, integrated platform.

## FEATURES

Adapter easily attaches the Thule Caprock roof platform to the uprights of your Thule Xsporter Pro truck racks

Includes four adapter plates and necessary hardware

Compatible with Thule Xsporter Pro, Thule Xsporter Pro Mid and Thule Xsporter Pro Shift truck-bed racks



# Thule Caprock Crossbar Kit

---

**Model name:**                      **Model number:** 611300    **Price:** \$169.95

---

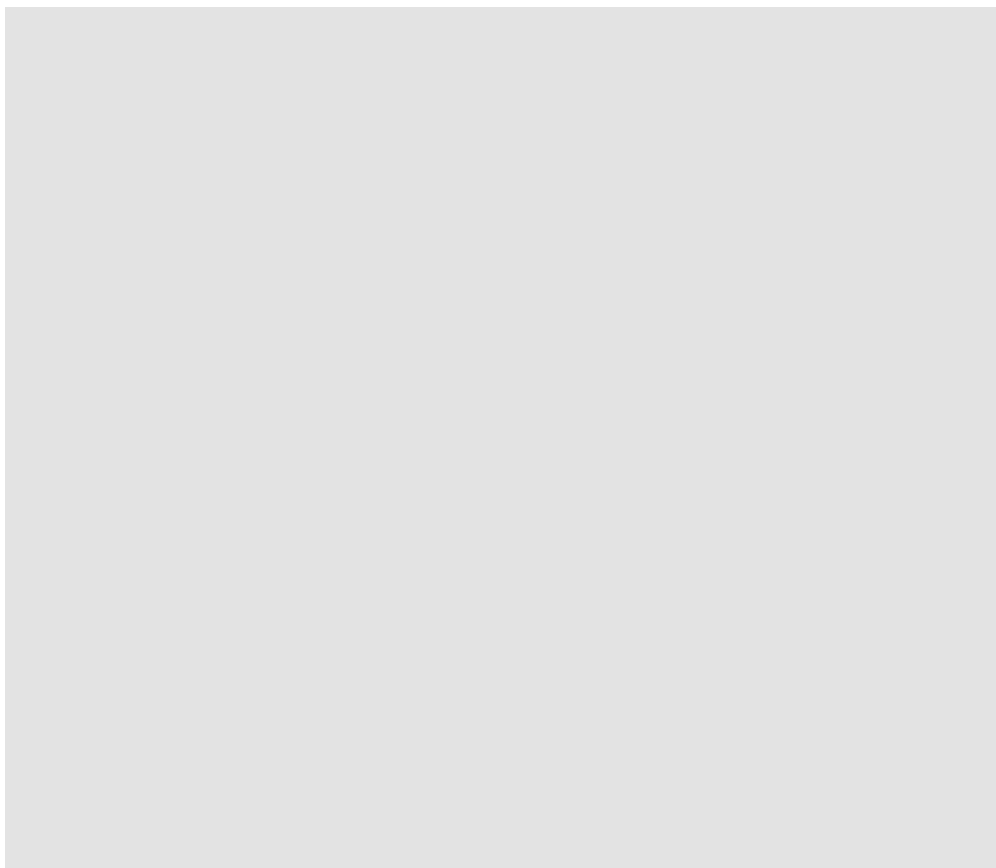
Crossbar kit allows you to easily attach the Thule Caprock roof platform to existing crossbar systems.

## FEATURES

Easily attach your Thule Caprock roof platform to your factory rack or other third-party rack systems

Crossbar kit includes four mounting points for a secure attachment

Locks are included to secure your roof platform to your vehicle's crossbars





# > Water & Winter Sport Racks

Thule sport racks give you secure and easy transportation of your kayak, skis, or board.





New

Rugged thermo-formed ABS construction protects reels from the elements and prying eyes

Fits up to 7000 series spinning reels and most bait casting reels

Can accommodate rods up to 12' in length

Box includes Thule One-Key lock for security

Soft rubber seal creates weather resistant protection while foam-lined front closure holds rods securely in place

Universal mounting hardware able to fit bars up to 90mm wide



### Safe and secure

Locking mechanism secures fully rigged fishing rods - Lockable box secures both rods, reels and mounting hardware



### Left or right side

Side opening symmetrical design can be mounted on both sides of vehicle

### Spacious design

Generous capacity - fits 4 spinning or bait casting reels

### Adjustable hardware

Griplock hardware keeps reels separated, easier to load/unload and adjustable for multiple sizes and styles of rods and reels

# > Thule OnShore

Dedicated fishing rod carrier for fully rigged rods.

Always at the ready with Thule OnShore - a spacious fishing rod carrier that allows you to safely and securely transport up to 4 fully rigged rods - ready to cast.



### TECHNICAL SPECIFICATIONS

**THULE ONSHORE ROOFTOP FISHING ROD CARRIER**

**THULE NUMBER**  
871000

**MAX NUMBER OF FISHING RODS**  
4

**MAX WEIGHT CAPACITY**  
20 lbs / 9.1 kg

**PRODUCT WEIGHT**  
15 lbs / 6.8 kg

**PRODUCT MATERIALS**  
ABS plastics

**COMMERCIAL AVAILABILITY**  
January 15, 2023

**COLORWAYS**  
Black



# Thule OnShore

**Model name:**                      **Model number:** 871000    **Price:** \$499.95

Always at the ready with Thule OnShore - a spacious fishing rod carrier that allows you to safely and securely transport up to 4 fully rigged rods - ready to cast. The durable ABS shell protects your valuable tackle reels while the padded front mounting system secures your rod safely when driving. Since you transport your fishing rods fully rigged, you can spend more time casting, catching fish, or telling your buddies about the one that got away. You arrive rigged and ready to go - with Thule Onshore, you get to enjoy more time fishing and less time rigging up!



## FEATURES

Rugged thermo-formed ABS construction protects reels from the elements and prying eyes (approximate dimensions = 16" long, 8" deep)

Griplock hardware - keeps reels separated, easier to load/unload and adjustable for multiple sizes and styles of rods and reels

Soft rubber seal creates weather resistant protection while foam-lined front closure holds rods securely in place

Universal mounting hardware able to fit bars up to 90mm wide

Side opening symmetrical design can be mounted on both sides of vehicle

Fits up to 7000 series spinning reels and most bait casting reels

Can accommodate rods up to 12 in length

Included hardware allows for both leveling box and rod holder for perfect fit on different roof styles

Small drain holes allow for water to escape box

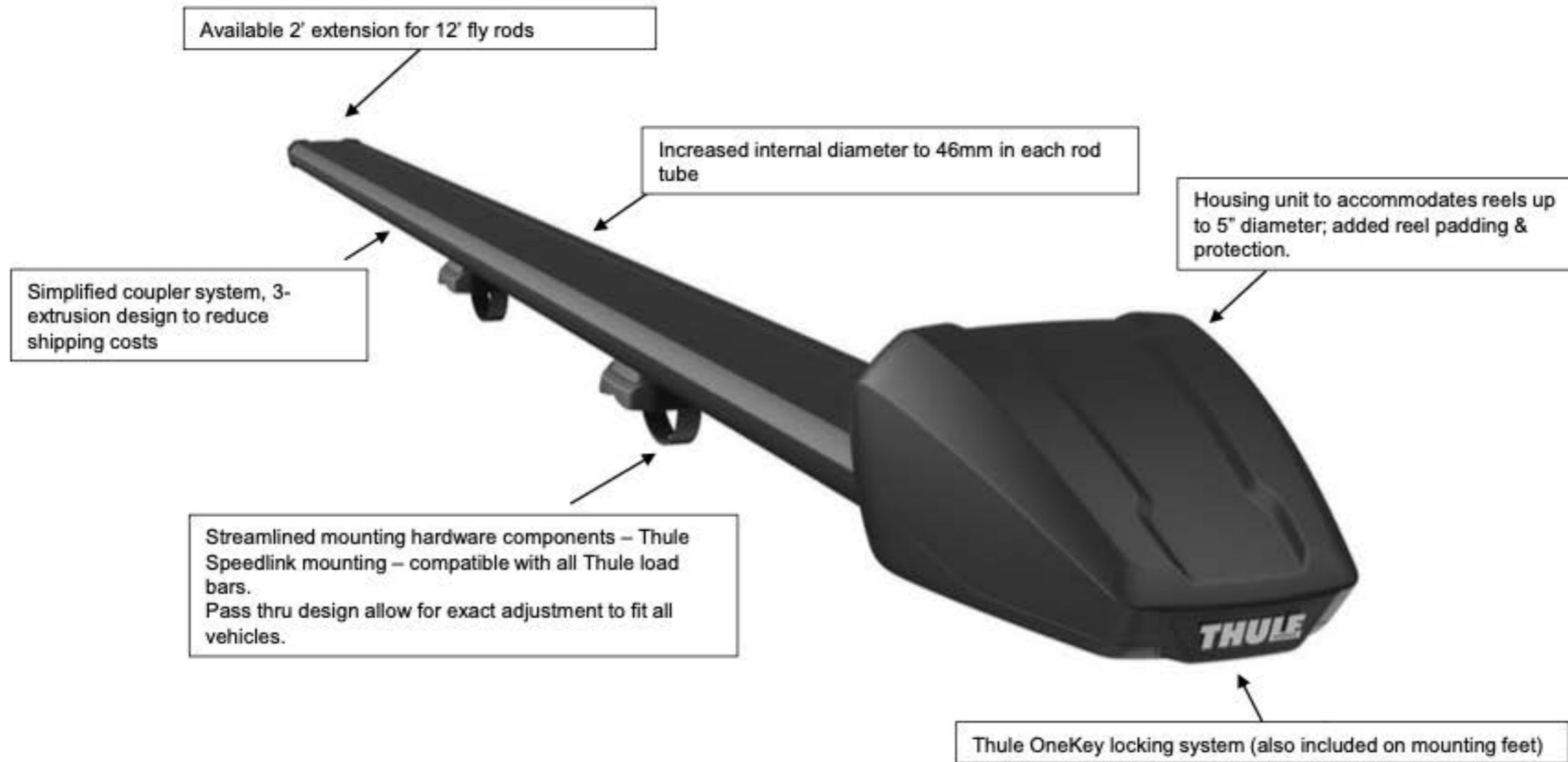
Box includes Thule One-Key lock for security



## TECHNICAL SPECIFICATIONS

- DIMENSIONS (LXWXH)** ..... 25 X 22 X 9.75 IN
- WEIGHT(LB)** ..... 15
- ONE KEY SYSTEM COMPATIBLE** .... YES
- FITS THULE WINGBAR EVO** ..... YES
- MODEL NUMBER** ..... 871000

# Fishing Rod Carriers – RodVault XT





# Fishing Rod Carriers – RodVault XT

- **Competitive Benefits:**

- Reduced shipping size (extrusions in three pieces)
- Simplified coupler design for quicker installation and storage
- Pass through design of extrusion track and coupler allow for exact vehicle fit.

- **Three sku's;**

- 2 Rod Carrier – Target Retail - **\$499.95 USD**
- 4 Rod Carrier - Target Retail - **\$799.95 USD**
- 2' extension - Target Retail - **\$124.95 USD**

- **Launching Q1 2024**



# Thule Fly Fishing RodVault

**Model name:**                      **Model number:** 870002    **Price:** \$749.95

The safe and secure way to transport fully rigged fly rods.



## FEATURES

Accommodates reel diameters up to 4.25" with fighting butts

Aircraft-grade, anodized aluminum rod tubes and heavy duty, glass-reinforced, nylon reel case for maximum reel protection

Fishing rod rack locks to keep rods safe and secure

Lock fishing rod rack to the vehicle with a small padlock (not included)

Universal mounting system fits a wide range of load bars

Polypropylene lined rod tubes for added rod, guide and tip protection



Silver - 4 rods  
870004

## TECHNICAL SPECIFICATIONS

**DIMENSIONS (LXWXH)** ..... 128 X 7.5 X 8 IN  
**WEIGHT(LB)** ..... 21  
**ONE KEY SYSTEM COMPATIBLE** .... NO  
**FITS THULE WINGBAR EVO** ..... YES  
**MODEL NUMBER** ..... 870002



# Thule RodVault ST

**Model name:**                      **Model number:** 870011    **Price:** \$549.95

The safe and secure way to transport fully rigged standard tackle rods.

## FEATURES

Holds up to 6 (dependent on reel size) fully assembled bait / spinning rods up to 8' long

Oversized rod tubes accommodate standard tackle equipment's bigger stripping guides

Aircraft-grade, anodized aluminum rod tubes and heavy duty, glass-reinforced, nylon reel case for maximum reel protection

Fishing rod rack locks to keep rods safe and secure

Lock fishing rod rack to the vehicle with a small padlock (not included)

Universal mounting system fits a wide range of load bars

Polypropylene lined rod tubes for added rod, guide and tip protection



## TECHNICAL SPECIFICATIONS

**DIMENSIONS (LXWXH)** ..... 100 X 15 X 10 IN  
**WEIGHT(LB)** ..... 26  
**ONE KEY SYSTEM COMPATIBLE** .... NO  
**FITS THULE WINGBAR EVO** ..... YES  
**MODEL NUMBER** ..... 870011

# Thule Hullavator Pro

**Model name:**                      **Model number:** 898001    **Price:** \$949.95

Lift-assist rack for kayaks handles up to 40 lbs of the weight so you can load and unload – even on your own.

## FEATURES

Load and unload your kayak on your own, thanks to the gas-assist struts that lift and lower 40 lbs of the kayak's weight

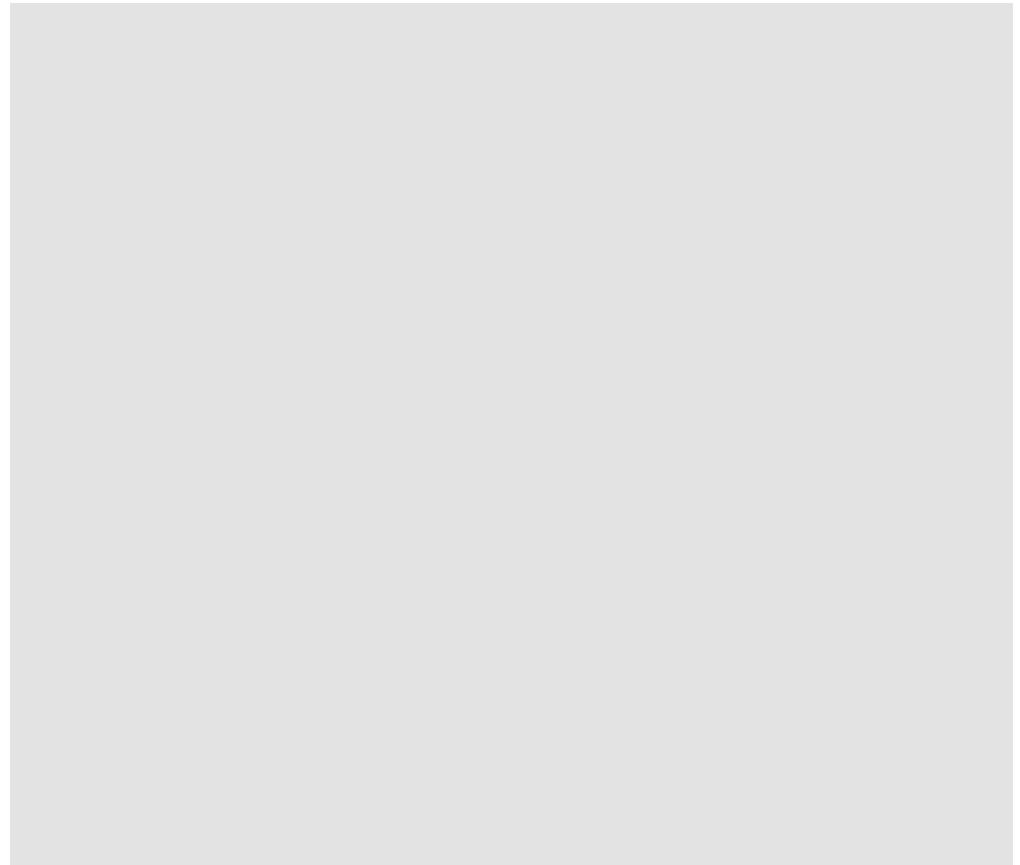
Load/unload and strap your kayak at waist height, with the help of double extending arms that lower the kayak by up to 3 feet

Maximum protection for your kayak, thanks to 8 touch points of padded support

Corrosion-resistant kayak cradles expand to fit wide kayaks

Aluminum, double-coated steel construction for corrosion resistance delivers a longer product life

Includes Thule QuickDraw bow and stern tie-downs for transporting 1 kayak





# Thule Hull-a-Port Aero

**Model name:**                      **Model number:** 849000    **Price:** \$349.95

Innovative kayak carrier that is safe, stylish, easy to use and integrates seamlessly with Thule roof rack systems.

## FEATURES

Quickly raise or fold when not in use using the convenient front release handle

Easily manage load straps while strapping down the kayak using the integrated StrapCatch

Kayaks are protected during transit due to the durable and soft rubber padding

Theft resistant design keeps carrier securely attached to load bars (locks included)

Easy to install directly into the Thule WingBar Evo or AeroBlade T-track, or around Thule SquareBar\* via the integrated, tool-free mounting hardware (\*SquareBar requires an adapter)



## TECHNICAL SPECIFICATIONS

<b>LOAD CAPACITY(POUNDS)</b> .....	75
<b>DIMENSIONS (LXWXH)</b> .....	18 X 8 X 17.5 IN
<b>WEIGHT(LB)</b> .....	15,2
<b>RUBBER COVER FOR STRAP BUCKLE</b> ....	YES
<b>ONE KEY SYSTEM COMPATIBLE</b> .....	YES
<b>FITS THULE WINGBAR EVO</b> .....	YES
<b>MODEL NUMBER</b> .....	849000



# Thule Hull-a-Port XTR

**Model name:**                    **Model number:** 848004    **Price:** \$279.95

Versatile, lockable kayak rack that carries one or two kayaks and folds flat when not in use.

## FEATURES

Carry up to two kayaks due to the dual position design that transforms from a J-cradle to two boat stacker position

Integrated StrapCatch for easy strap management when loading kayak

Upright folds flat when not in use

Fully assembled out of the box

Locks to load bars with Thule's One Key System Lock Cylinders (sold separately)

Universal mounting design fits all types of load bars up to 80.5 mm wide quickly and easily

Load straps with buckle bumpers and bow and stern tie downs included for one boat

Supports one boat up to 75 lb or two boats with combined weight of 130 lbs or less



## TECHNICAL SPECIFICATIONS

<b>LOAD CAPACITY(POUNDS)</b> .....	130
<b>DIMENSIONS (LXWXH)</b> .....	20 X 9 X 20 IN
<b>WEIGHT(LB)</b> .....	12,5
<b>RUBBER COVER FOR STRAP BUCKLE</b> ....	YES
<b>LENGTH OF STRAPS(FT)</b> .....	2X15'
<b>ONE KEY SYSTEM COMPATIBLE</b> .....	YES
<b>FITS THULE WINGBAR EVO</b> .....	YES
<b>MODEL NUMBER</b> .....	848004



# Thule Hull-a-Port

---

**Model name:**                      **Model number:** 834002    **Price:** \$229.95

---

High-performance and easy-to-use J-style kayak rack.

## FEATURES

Stable, space-saving design thanks to the angled shape of the kayak rack

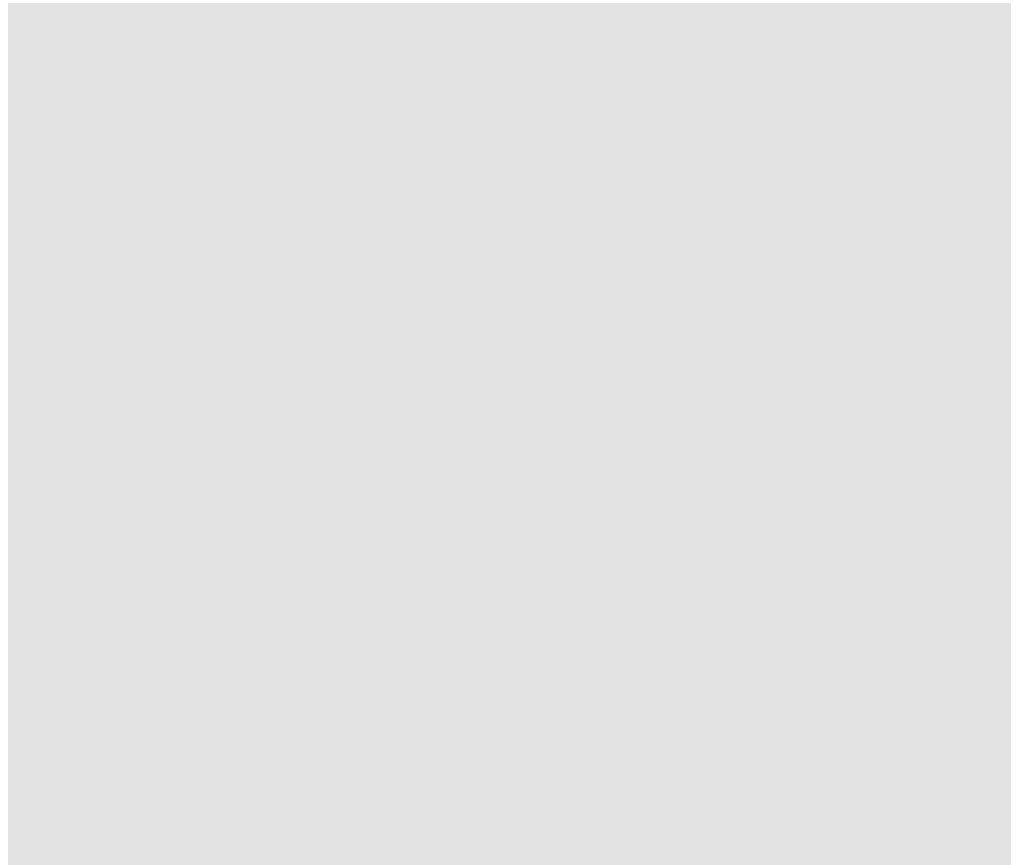
Wide mouth J-profile offers easier loading and unloading

Thick, all-weather pads provide maximum kayak protection

Powerful straps keep the kayak firmly secured

Durable, rust-resistant coating and hardware for longer product life

Thule Buckle Bumper buckle protects the kayak and car from scratches during loading and transport



# Thule DockGrip

**Model name:**                      **Model number:** 895001    **Price:** \$299.95

A versatile, horizontal kayak carrier with large cushioned, flexible pads that conform to a large range of hull shapes as well as SUPs.

## FEATURES

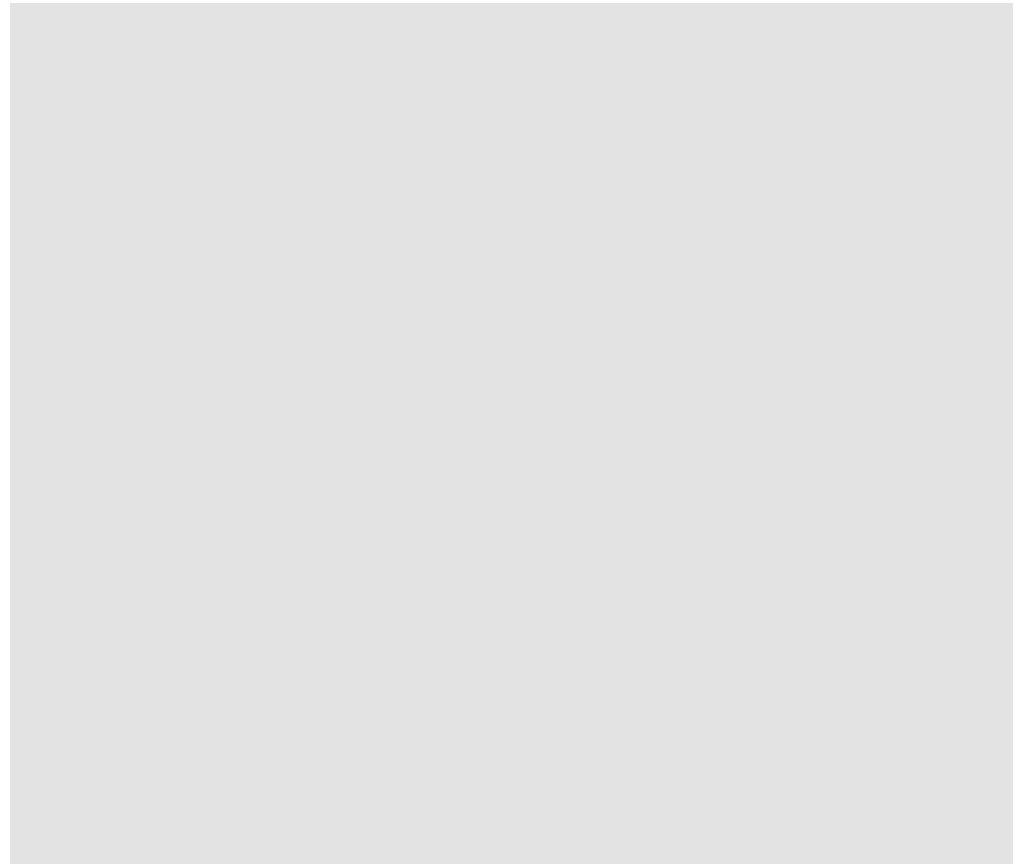
Can carry a variety of hull shapes as well as SUPs with two independent pivoting saddles with angle-setting lever

Protects the hull with large, flexible, cushioned pads

Easily secure the kayak or SUP using the center load straps with car-protective buckle bumpers and QuickDraw bow and stern tie-downs

Fits a variety of Thule rack systems, round bars and most factory racks due to T-Track and FlipFit brackets

Accommodates kayaks and SUPs up to 36 in/90 cm wide and 85 lbs/40 kg





# Thule DockGlide

**Model name:**                      **Model number:** 896001    **Price:** \$299.95

A flexible, kayak carrier with felt-lined saddles that make it easier to load and unload.

## FEATURES

Easily load and unload the kayak with the pivoting felt-lined rear saddles that help glide and center a kayak onto the vehicle

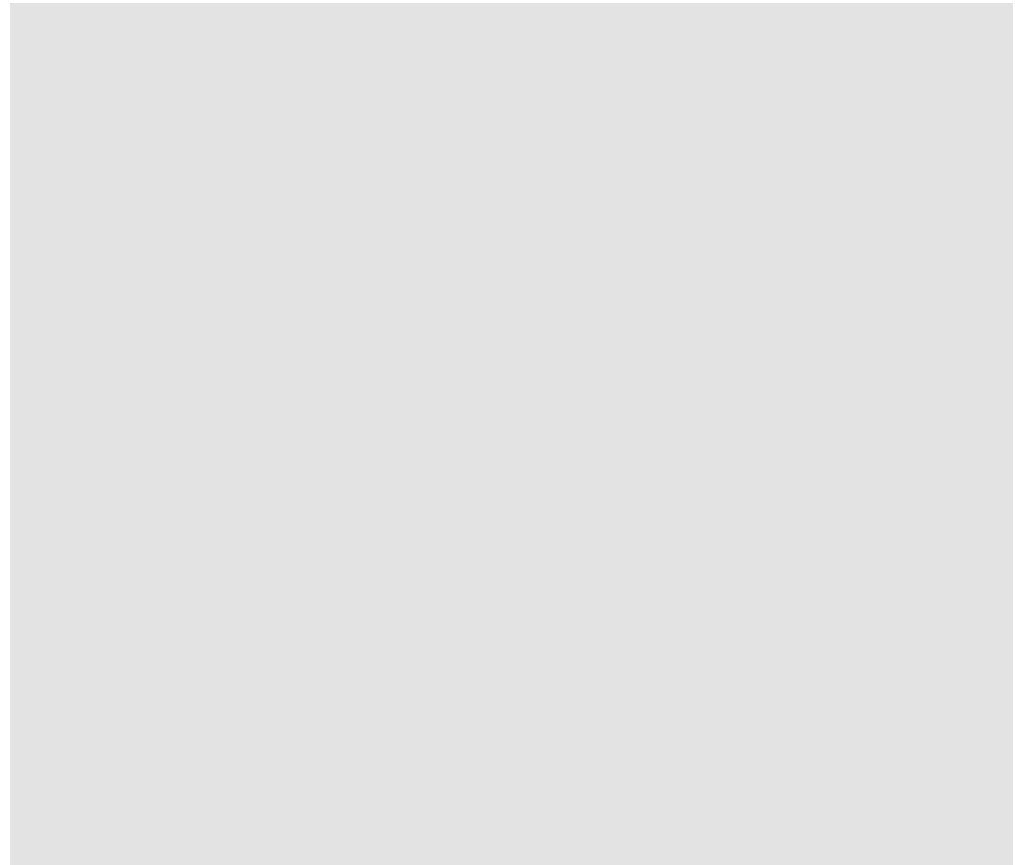
Two independent pivoting saddles with angle-setting lever conforms to limitless range of hull shapes

Protects the hull with large, flexible, cushioned pads

Quickly secure the kayak using the center load straps with car-protective buckle bumpers and QuickDraw bow and stern tie-downs

Fits a variety of Thule rack systems, round bars and most factory racks due to T-Track and FlipFit brackets

Accommodates kayaks up to 36 in/90 cm wide and 75 lbs/35 kg



# Thule Top Deck

**Model name:**                      **Model number:** 881002    **Price:** \$159.95

Transport your kayak safely with these custom designed saddles that conform to the most popular hull shapes.

## FEATURES

Integrated rubber pads protect the hull and help hold the kayak in place for transportation

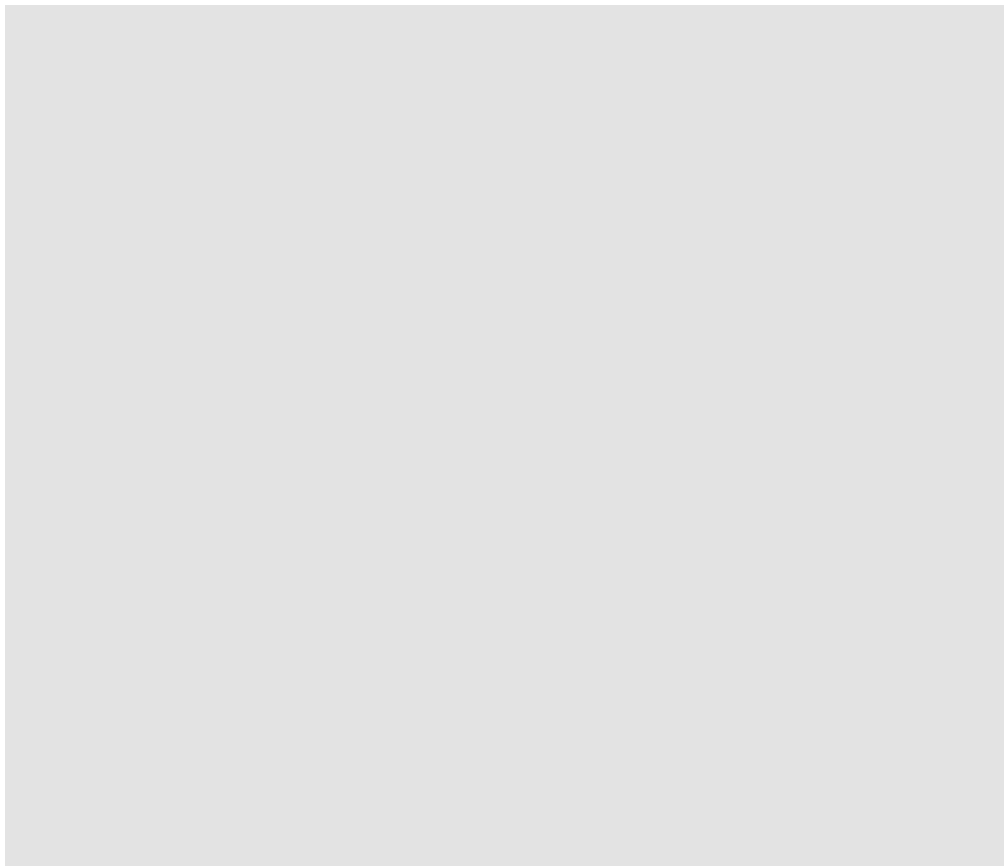
Carries 1 kayak and requires 1 person to load and unload

Includes all straps to transport 1 kayak

Accommodates kayaks up to 36" wide and weighing 75 lbs

Requires Thule rack systems crossbars, round bars, or factory racks - see Buyer's Guide

Primary watercraft: Kayak



# Thule Portage

**Model name:**                      **Model number:** 819001    **Price:** \$199.95

Easy-to-load, safe, and secure rack for canoes.

## FEATURES

Easy loading, thanks to durable gunwales with ramped sides

Cushioned weather-resistant base padding protects canoe during transit

Strong, durable load straps with buckle bumpers protect car and canoe from scratches

Easy to secure canoe during transport, thanks to ratcheting Quick Draw tie-downs with carabineer



## TECHNICAL SPECIFICATIONS

<b>MAXIMUM LOAD(LB)</b> .....	100
<b>DIMENSIONS (LXWXH)</b> .....	3.5 X 6 X 2.3 IN
<b>WEIGHT(LB)</b> .....	4,2
<b>RUBBER COVER FOR STRAP BUCKLE</b> ....	YES
<b>LENGTH OF STRAPS(FT)</b> .....	2X15'
<b>FITS THULE WINGBAR EVO</b> .....	YES
<b>COLOR</b> .....	BLACK
<b>UPC-A</b> .....	091021829329
<b>AMERICAS ARTICLE NUMBER</b> .....	819001
<b>MODEL NUMBER</b> .....	819001

# Thule SUP Taxi XT

**Model name:**                      **Model number:** 810001    **Price:** \$349.95

The Thule SUP Taxi XT combines security and convenience making it the most popular Stand Up Paddleboard carrier on the market.

## FEATURES

Newly designed push button lock system allows for quick and easy locking strap operation and security

Exclusive, telescoping design delivers a custom fit for board widths up to 34" wide

Unsurpassed security for your boards due to the heavy-duty, steel reinforced webbing and easy-to-use locking cam

Soft, weather resistant padding protects boards during transit



## TECHNICAL SPECIFICATIONS

LOAD CAPACITY(POUNDS) .....	55
DIMENSIONS (LXWXH) .....	34 TO 40 X 6.5 X 6 IN
WEIGHT(LB) .....	15
LOADING WIDTH(IN) .....	28-34
RUBBER COVER FOR STRAP BUCKLE ....	NO
ONE KEY SYSTEM COMPATIBLE .....	YES
FITS THULE WINGBAR EVO .....	YES
MODEL NUMBER .....	810001



# Thule Board Shuttle

---

**Model name:**                      **Model number:** 811000    **Price:** \$199.95

---

Versatile surf and SUP rack that is ideal for carrying one or two boards on any type of roof rack.

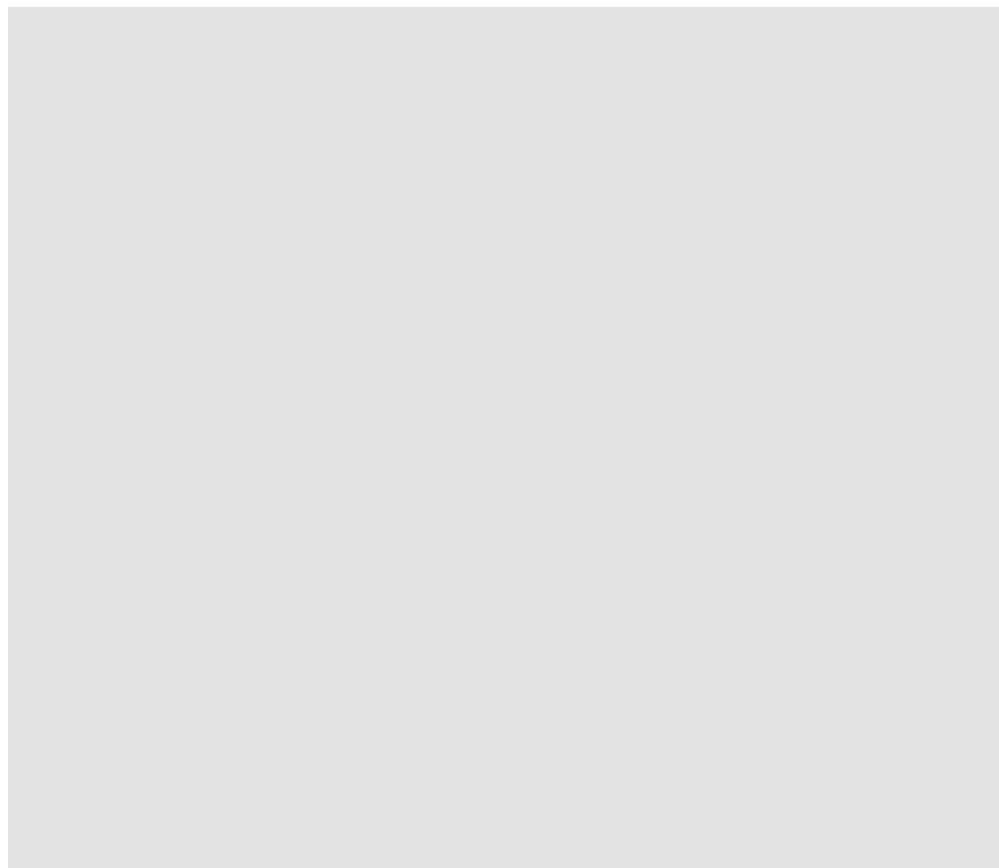
## FEATURES

Telescoping design delivers a custom fit for board widths from 70 to 86 cm/28 to 34 in

Dual loading allows for transport of up to two boards with maximum stability

Soft, weather-resistant padding protects boards during transit

Strong, durable load straps with adjustable wrap-around padding on straps protect board from strap abrasion



# > Rooftop Tents

From rugged overland excursions to simply sharing time with family outdoors, roof top tents allow you to go beyond the boundaries and explore the world from above.



# Current Offering

**Classic** \$1000-2000



**Modern** \$2000-3000



**Hardshell** \$3500





# Thule Approach

**Model name:**                      **Model number:** 901010    **Price:** \$3,299.95

On top of the world, on the top of your car. Thule Approach is a tent that makes adventure travel easier, more comfortable, and more fun. The car top tent maximizes interior space, giving you a great place to hang out in, as well as a comfortable night's sleep. For an even more spacious experience, the tent is compatible with an annex or awning (sold separately). Made for rugged adventures off the beaten path, this rooftop tent is equally great for local explorations or weekend getaways with family and friends. Transform your vehicle into a home away from home and live the van-life experience no matter what you drive—SUV, sedan, truck, or hatchback.



## FEATURES

A more modern tent shape delivers an extra spacious interior and more living space for you and your gear

Thick, dual-layer foam mattress has a supportive bottom foam layer and a soft upper layer for a luxurious camping experience

Panoramic skylights and windows allow you to stargaze, get closer to nature, and keep the tent cool and well ventilated

Rigorously tested together with Thule roof racks to ensure a safe and secure fit

Lockable mounting brackets secure the tent to your roof racks in half the time of traditional rooftop tents and have a torque limiting tool for safer installation

Removable rain cover with three different modes is suitable for any weather

Quick to set up: unzip the travel cover, unfold the base and you are ready to camp in under 3 minutes



Fennel Tan - S 901011    Pelican Gray - M 901012    Fennel Tan - M 901013    Dark Slate - M 901014    Pelican Gray - L 901015    Fennel Tan - L 901016

**TECHNICAL SPECIFICATIONS**

**SLEEPING CAPACITY** ..... 2 PERSON

**DIMENSIONS (OPEN)** ..... 84 X 48 X 35 IN

**DIMENSIONS (CLOSED)** ..... 43 X 48 X 11 IN

**PEAK INTERNAL HEIGHT(IN)** ..... 35

**WEIGHT(LB)** ..... 110

**STATIC WEIGHT CAPACITY(LB)** .... 600

**MINIMUM BAR SPREAD(IN)** ..... 28

**BASE CONSTRUCTION** ..... WELDED ALUMINUM TUBE WITH INSULATION AND ALUMINUM CAP SHEET

**CANOPY FABRIC** ..... BREATHABLE, WATER RESISTANT 600D POLYESTER RIPSTOP

**MOSQUITO SCREENS** ..... YES

**SEASONS** ..... ALL

**COLOR** ..... PELICAN GRAY

**MODEL NUMBER** ..... 901010





# Thule Foothill

**Model name:**                      **Model number:** 901250    **Price:** \$1,999.95

Thule Foothill is a rooftop tent for 2 adults that folds compactly and preserves valuable space on your roof for bikes, kayaks, and other cargo for your next adventure.



## FEATURES

Folds compactly to preserve valuable space on your roof for bikes, kayaks, and other cargo

Aerodynamic profile when driving provides a smaller footprint to store in the off-season

Despite a compact travel size, the interior is just as spacious as a traditional 2-person rooftop tent

Features a wide entry, oversized panoramic rear window and dual skylights for maximum airflow and enhanced stargazing

Telescopic internal frame poles allow for easy, one-person setup and breakdown

Low-profile, symmetrical design allows the tent to be mounted on either side of your vehicle

Includes a plush, low profile 4cm foam mattress with removable, machine-washable cover

Exterior attachment points for lamps, storage solutions, or other gear to make a cozy, more personalized camp

Weather-resistant and durable main tent fabric withstands harsh weather conditions and is breathable to reduce condensation build-up inside the tent

The tent's internal pockets provide extra space to store items

## TECHNICAL SPECIFICATIONS

<b>SLEEPING CAPACITY</b> .....	2 PERSON
<b>DIMENSIONS (OPEN)</b> .....	84 X 47 X 37 IN
<b>DIMENSIONS (CLOSED)</b> .....	83 X 24 X 9,5 IN
<b>PEAK INTERNAL HEIGHT(IN)</b> .....	37
<b>WEIGHT(LB)</b> .....	122
<b>STATIC WEIGHT CAPACITY(LB)</b> ....	600
<b>MINIMUM BAR SPREAD(IN)</b> .....	24
<b>BASE CONSTRUCTION</b> .....	WELDED ALUMINUM TUBE WITH INSULATION AND ALUMINUM CAP SHEET
<b>CANOPY FABRIC</b> .....	BREATHABLE, WATER RESISTANT 600D POLYESTER RIPSTOP 1500WP
<b>INTERNAL FRAME</b> .....	5/8" (16MM) WRAPPED ALUMINUM
<b>MOSQUITO SCREENS</b> .....	YES
<b>SEASONS</b> .....	ALL
<b>COLOR</b> .....	AGAVE GREEN
<b>MODEL NUMBER</b> .....	901250

# Thule Basin

**Model name:**                      **Model number:** 901017    **Price:** \$3,499.95

The ultimate hybrid system that combines a rooftop tent and cargo carrier all in one. Thule Basin pops up in under a minute and the hard-shell exterior makes this rooftop tent suited for harsh weather conditions.



## FEATURES

Quick setup - from closed to ready for use in less than a minute

Pops straight up to provide a spacious living area

Versatile design converts rooftop tent for up to two people into a spacious cargo carrier

Patented canopy zipper system allows for easy conversion between a tent and a cargo carrier

Release both ends to open as a rooftop tent or, when converted to a cargo carrier, open one side to easily access gear

Easy to install mounting brackets securely lock the tent to your vehicle, feature a torque limiter to always ensure a safe install, and take half the time to install compared to traditional mounting systems

Insulated roof to help control the temperature inside the tent and reduce noise

Weather resistant, durable and breathable canopy for extra protection and comfort

Includes a telescoping ladder that attaches to either side for easy access

Includes a foam mattress with removable cover for added comfort



## TECHNICAL SPECIFICATIONS

<b>SLEEPING CAPACITY</b> .....	2 PERSON
<b>DIMENSIONS (OPEN)</b> .....	84 X 55 X 42.75 IN
<b>DIMENSIONS (CLOSED)</b> .....	84 X 55 X 12,75 IN
<b>PEAK INTERNAL HEIGHT(IN)</b> .....	36
<b>WEIGHT(LB)</b> .....	176
<b>STATIC WEIGHT CAPACITY(LB)</b> ....	600
<b>MINIMUM BAR SPREAD(IN)</b> .....	32
<b>CANOPY FABRIC</b> .....	260G COTTON AND POLYESTER COATED TO A WATERPROOF RATING OF 1500MM
<b>MOSQUITO SCREENS</b> .....	YES
<b>SEASONS</b> .....	ALL
<b>COLOR</b> .....	BLACK
<b>MODEL NUMBER</b> .....	901017

# Thule Basin Wedge

**Model name:**                      **Model number:** 901018      **Price:** \$3,499.95

The ultimate hybrid system that combines a rooftop tent and cargo carrier all in one. Thule Basin Wedge can be set up in under a minute and the hard-shell exterior makes this rooftop tent suited for harsh weather conditions.



## FEATURES

Quick setup – from closed to ready for use in less than a minute

Wedge shape makes it our most stable and quickest rooftop tent to deploy

Versatile design converts rooftop tent for up to two people into a spacious cargo carrier

Patented canopy zipper system allows for easy conversion between a tent and a cargo carrier

Easy to install mounting brackets securely lock the tent to your vehicle, feature a torque limiter to always ensure a safe install, and take half the time to install compared to traditional mounting systems

Insulated roof to help control the temperature inside the tent and reduce noise

Weather resistant, durable and breathable canopy for extra protection and comfort

Includes a telescoping ladder that attaches to either side or the rear of the tent for easy access

Includes a foam mattress with removable cover for added comfort



## TECHNICAL SPECIFICATIONS

<b>SLEEPING CAPACITY</b> .....	2 PERSON
<b>DIMENSIONS (OPEN)</b> .....	84 X 55 X 52 IN
<b>DIMENSIONS (CLOSED)</b> .....	84 X 55 X 12,8 IN
<b>PEAK INTERNAL HEIGHT(IN)</b> .....	46
<b>WEIGHT(LB)</b> .....	156
<b>STATIC WEIGHT CAPACITY(LB)</b> ....	600
<b>MINIMUM BAR SPREAD(IN)</b> .....	32
<b>CANOPY FABRIC</b> .....	260G COTTON AND POLYESTER COATED TO A WATERPROOF RATING OF 1500MM
<b>MOSQUITO SCREENS</b> .....	YES
<b>SEASONS</b> .....	ALL
<b>COLOR</b> .....	BLACK
<b>MODEL NUMBER</b> .....	901018

English. Local variations in product range may occur and products may be subject to change without further notice. With reservation against possible mistakes in the contents of the catalogue.  
Production: Thule Creative Team  
Photo: Adventure Production.  
Copyright 2021 Thule Inc.

**Thule Inc.**

42 Silvermine Road, Seymour, CT 06483.

Tel (203) 881-9600

*www.thule.com*