



WOMEN'S

S24

TOAD&CO



FEEL GOOD CLOTHES

We think people who feel good are happier, have more fun, and are more likely to pay the good vibes forward. Toad&Co clothes are thoughtfully designed to make sure whoever's wearing them feels good every single time - inside and out.



Sustainable Sourcing,
Materials & Processes Only



**FOR THE
PLANET**

Every Purchase
Gives Back



**JOY BACKED
GUARANTEE**

Clothes That
Bring You Joy





WOMEN'S PANTS & OVERALLS

S24

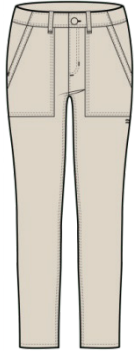


EARTHWORKS PANT | T1441816 | \$88 | 68% ORGANIC COTTON, 30% TENCEL™ LYOCELL, 2% ELASTANE | 0-14 | 31" INSEAM | 2/1



EARTHWORKS PANT

Color: SOOT
NRF Color Code: 089



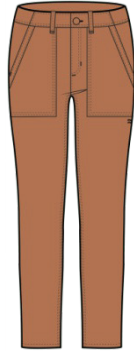
EARTHWORKS PANT

Color: SALT
NRF Color Code: 199



EARTHWORKS PANT

Color: GREEN MOSS
NRF Color Code: 302



EARTHWORKS PANT

Color: HAZEL
NRF Color Code: 847



EARTHWORKS PANT

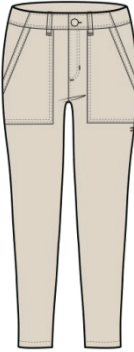
Color: MIDNIGHT
NRF Color Code: 453

EARTHWORKS ANKLE PANT | T1442910 | \$88 | 68% ORGANIC COTTON, 30% TENCEL™ LYOCELL, 2% ELASTANE | 0-14 | 28" INSEAM | 2/1



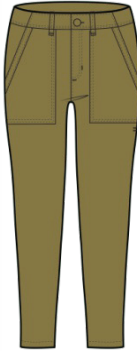
EARTHWORKS ANKLE PANT

Color: SOOT
NRF Color Code: 089



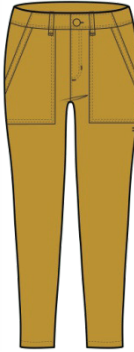
EARTHWORKS ANKLE PANT

Color: SALT
NRF Color Code: 199



EARTHWORKS ANKLE PANT

Color: GREEN MOSS
NRF Color Code: 302



EARTHWORKS ANKLE PANT

Color: POLLEN
NRF Color Code: 705



EARTHWORKS ANKLE PANT

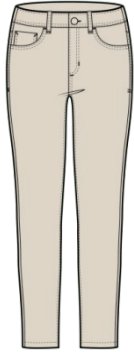
Color: CINNAMON
NRF Color Code: 646

EARTHWORKS 5 PKT SKINNY PANT | T1441007 | \$90 | 68% ORGANIC COTTON, 30% TENCEL™ LYOCELL, 2% ELASTANE | 0-14 | 30" INSEAM | 2/1



**EARTHWORKS 5
POCKET SKINNY PANT**

Color: SOOT
NRF Color Code: 089



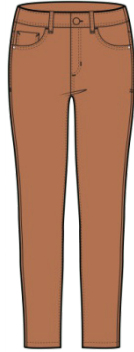
**EARTHWORKS 5
POCKET SKINNY PANT**

Color: SALT
NRF Color Code: 199



**EARTHWORKS 5
POCKET SKINNY PANT**

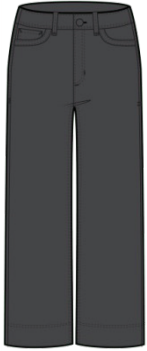
Color: MIDNIGHT
NRF Color Code: 453



**EARTHWORKS 5
POCKET SKINNY PANT**

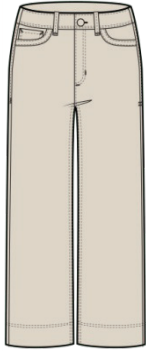
Color: HAZEL
NRF Color Code: 847

EARTHWORKS WIDE LEG PANT | T1442907 | \$95 | 68% ORGANIC COTTON, 30% TENCEL™ LYOCELL, 2% ELASTANE | 0-14 | 26" INSEAM | 2/1



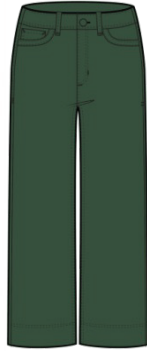
**EARTHWORKS WIDE
LEG PANT**

Color: SOOT
NRF Color Code: 089



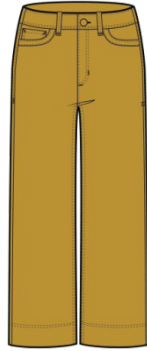
**EARTHWORKS WIDE
LEG PANT**

Color: SALT
NRF Color Code: 199



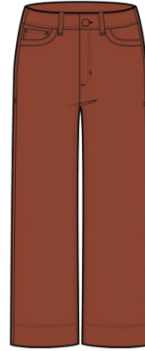
**EARTHWORKS WIDE
LEG PANT**

Color: PASTURE
NRF Color Code: 327



**EARTHWORKS WIDE
LEG PANT**

Color: POLLEN
NRF Color Code: 705



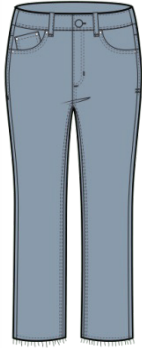
**EARTHWORKS WIDE
LEG PANT**

Color: CINNAMON
NRF Color Code: 646

BALSAM SEEDED CUTOFF PANT | T1442302 | \$110 | 99% ORGANIC COTTON, 1% ELASTANE | 0-14 | 27.5" INSEAM | 2/1



BALSAM SEEDED CUTOFF PANT
Color: HAZEL
NRF Color Code: 847



BALSAM SEEDED CUTOFF PANT
Color: WEATHERED BLUE
NRF Color Code: 481

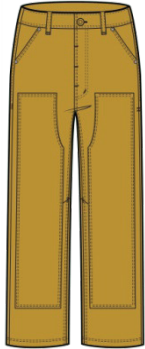


BALSAM SEEDED CUTOFF PANT
Color: NATURAL II
NRF Color Code: 286

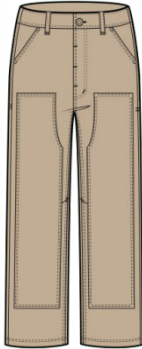


BALSAM SEEDED CUTOFF PANT
Color: WASHED BLACK
NRF Color Code: 938

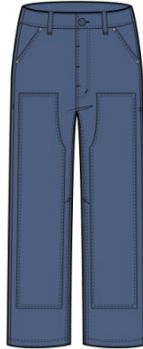
W'S JUNIPER UTILITY PANT | T1441301 | \$110 | 98% ORGANIC COTTON, 2% ELASTANE | 0-14 | 27.5" INSEAM | 2/1



W'S JUNIPER UTILITY PANT
Color: POLLEN
NRF Color Code: 705



W'S JUNIPER UTILITY PANT
Color: CHAI
NRF Color Code: 215



W'S JUNIPER UTILITY PANT
Color: FRENCH BLUE
NRF Color Code: 496



W'S JUNIPER UTILITY PANT
Color: OLIVE FLOWER EMBROIDERY
NRF Color Code: 381

NEW

W'S JUNIPER UTILITY OVERALL | T1441305 | \$140 | 98% ORGANIC COTTON, 2% ELASTANE | XS-XL | 27.5" INSEAM | 2/1



W'S JUNIPER UTILITY OVERALL

Color: HONEY BROWN
NRF Color Code: 201



W'S JUNIPER UTILITY OVERALL

Color: FRENCH BLUE
NRF Color Code: 496

NEW

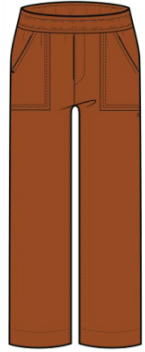
W'S JUNIPER GARAGE SHORTIE | T1782410 | \$130 | 98% ORGANIC COTTON, 2% ELASTANE | XS-XL | 4" INSEAM | 2/1



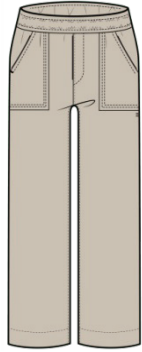
W'S JUNIPER GARAGE SHORTIE

Color: POLLEN
NRF Color Code: 705

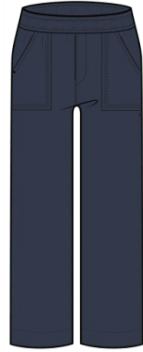
W'S TAJ HEMP PANT | T1442001 | \$88 | 54% HEMP, 44% TENCEL™ LYOCELL, 2% ELASTANE | XS-XL | 28" INSEAM | 2/1



W'S TAJ HEMP PANT
Color: UMBER
NRF Color Code: 602



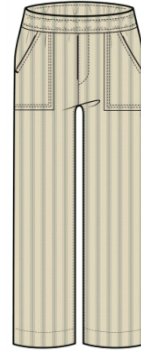
W'S TAJ HEMP PANT
Color: OATMEAL
NRF Color Code: 284



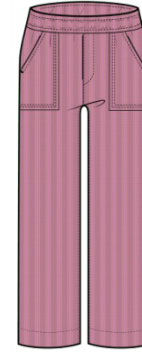
W'S TAJ HEMP PANT
Color: TRUE NAVY
NRF Color Code: 414



W'S TAJ HEMP PANT
Color: JASPER LARGE
FLORAL PRINT
NRF Color Code: 343

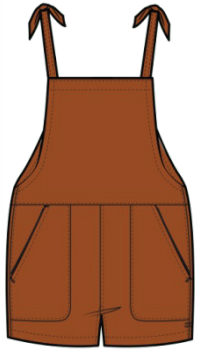


W'S TAJ HEMP PANT
Color: BARLEY STRIPE
NRF Color Code: 289



W'S TAJ HEMP PANT
Color: TULIP STRIPE
NRF Color Code: 503

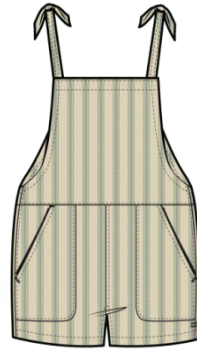
TAJ HEMP SHORTERALL | T1782306 | \$95 | 54% HEMP, 44% TENCEL™ LYOCELL, 2% ELASTANE | XS-XL | 3.75" INSEAM | 2/1



TAJ HEMP SHORTERALL
Color: UMBER
NRF Color Code: 602



TAJ HEMP SHORTERALL
Color: JASPER LARGE
FLORAL PRINT
NRF Color Code: 343



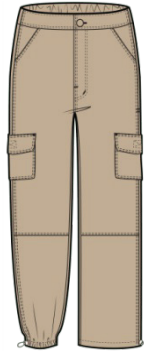
TAJ HEMP SHORTERALL
Color: BARLEY STRIPE
NRF Color Code: 289

NEW

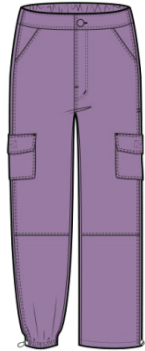
W'S TRAILScape PANT | T1442400 | \$95 | 100% RECYCLED NYLON | XS-XL | 27" INSEAM | 2/1



W'S TRAILScape PANT
Color: BEETLE
NRF Color Code: 365



W'S TRAILScape PANT
Color: CHAI
NRF Color Code: 215



W'S TRAILScape PANT
Color: ORCHID
NRF Color Code: 511

NEW

SUNKISSED WIDE LEG PANT II | T1442401 | \$88 | 88% RECYCLED POLYESTER, 12% ELASTANE | XS-XL | 24.5" INSEAM | 2/1



SUNKISSED WIDE LEG PANT II
Color: BLACK MICRO FLORAL PRINT
NRF Color Code: 003



SUNKISSED WIDE LEG PANT II
Color: MIDNIGHT FRUIT PRINT
NRF Color Code: 475



SUNKISSED WIDE LEG PANT II
Color: SHASTA PRINT
NRF Color Code: 487



SUNKISSED WIDE LEG PANT II
Color: BLACK
NRF Color Code: 100

NEW

SUNKISSED WIDE LEG PANT II (TEXTURE) | T1442401 | \$88 | 91% RECYCLED POLYESTER, 9% ELASTANE | XS-XL | 24.5" INSEAM | 2/1



SUNKISSED WIDE LEG PANT II

Color: SALT LEAF
TEXTURE PRINT
NRF Color Code: 386

SUNKISSED WIDE LEG PANT II

Color: CINNAMON
TEXTURE
NRF Color Code: 607

SUNKISSED JOGGER | T1442101 | \$88 | 88% RECYCLED POLYESTER, 12% ELASTANE | XS-XL | 27.5" INSEAM | 2/1



SUNKISSED JOGGER

Color: TAFFY MICRO
FLORAL PRINT
NRF Color Code: 689

SUNKISSED JOGGER

Color: SHASTA PRINT
NRF Color Code: 487

SUNKISSED JOGGER

Color: BLACK
NRF Color Code: 100

CHAKA WIDE LEG PANT | T1441011 | \$78 | 48% TENCEL™ LYOCCELL, 48% ORGANIC COTTON, 4% ELASTANE | XS-XL | 25" INSEAM | 2/1



CHAKA WIDE LEG PANT
Color: MIDNIGHT FLORAL
PRINT
NRF Color Code: 426



CHAKA WIDE LEG PANT
Color: MINERAL LG
FLORAL PRINT
NRF Color Code: 469



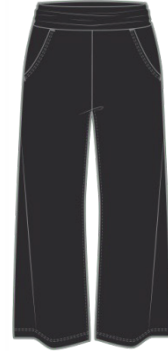
CHAKA WIDE LEG PANT
Color: FAWN POLKA DOT
PRINT
NRF Color Code: 217



CHAKA WIDE LEG PANT
Color: BARLEY MULTI
FLORAL PRINT
NRF Color Code: 149



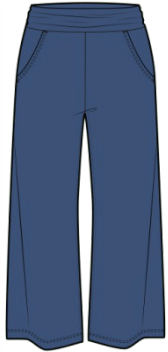
CHAKA WIDE LEG PANT
Color: PACIFIC HALF DAISY
PRINT
NRF Color Code: 490



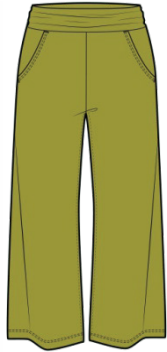
CHAKA WIDE LEG PANT
Color: BLACK
NRF Color Code: 100

NEW

CHAKA WIDE LEG PANT (TEXTURE) | T1441011 | \$78 | 50% RECYCLED POLY, 25% OC, 16% TENCEL™, 9% ELASTANE | XS-XL | 25" INSEAM | 2/1



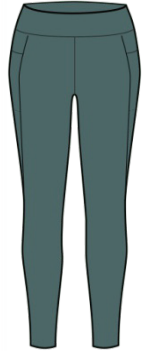
CHAKA WIDE LEG PANT
Color: CORNFLOWER
TEXTURE
NRF Color Code: 498



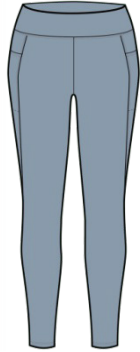
CHAKA WIDE LEG PANT
Color: LIME TEXTURE
NRF Color Code: 336

NEW

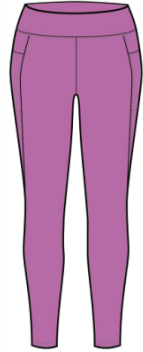
SUNTRAIL 7/8 TIGHT | T1442403 | \$88 | 89% RECYCLED NYLON, 11% ELASTANE | XS-XL | 25.5" INSEAM | 2/1



SUNTRAIL 7/8 TIGHT
Color: SILVER PINE
NRF Color Code: 321



SUNTRAIL 7/8 TIGHT
Color: WEATHERED BLUE
NRF Color Code: 481



SUNTRAIL 7/8 TIGHT
Color: TULIP
NRF Color Code: 517

TERRANE 7/8 TIGHT | T1402200 | \$70 | 52% ORGANIC COTTON, 34% TENCEL™ LYOCCELL, 14% ELASTANE | XS-XL | 25.5" INSEAM | 2/1



TERRANE 7/8 TIGHT
Color: CHICORY FLORAL
PRINT
NRF Color Code: 474



TERRANE 7/8 TIGHT
Color: JASPER LARGE
FLORAL PRINT
NRF Color Code: 343



WOMEN'S SHORTS

S24



EARTHWORKS CAMP SHORT | T1312010 | \$70 | 68% ORGANIC COTTON, 30% TENCEL™ LYOCELL, 2% ELASTANE | 0-14 | 5.5" INSEAM | 2/1



EARTHWORKS CAMP SHORT

Color: POLLEN
NRF Color Code: 705

EARTHWORKS CAMP SHORT

Color: GREEN MOSS
NRF Color Code: 302

EARTHWORKS CAMP SHORT

Color: HAZEL
NRF Color Code: 847

EARTHWORKS CAMP SHORT

Color: PASTURE
NRF Color Code: 327

EARTHWORKS CAMP SHORT

Color: SALT
NRF Color Code: 199

EARTHWORKS CAMP SHORT

Color: SOOT
NRF Color Code: 089

BALSAM SEEDED CUTOFF SHORT | T1312304 | \$85 | 99% ORGANIC COTTON, 1% ELASTANE | 0-14 | 7.5" INSEAM | 2/1



BALSAM SEEDED CUTOFF SHORT

Color: NATURAL
NRF Color Code: 016

BALSAM SEEDED CUTOFF SHORT

Color: HAZEL
NRF Color Code: 847

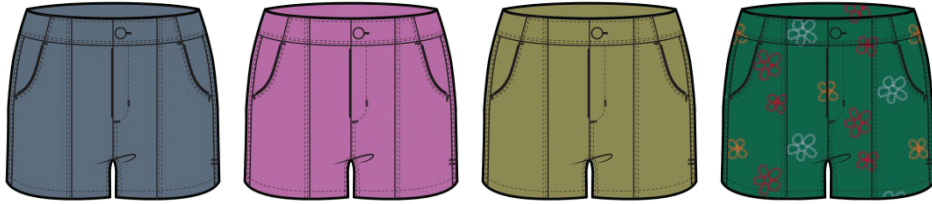
BALSAM SEEDED CUTOFF SHORT

Color: WEATHERED BLUE
NRF Color Code: 481

BALSAM SEEDED CUTOFF SHORT

Color: WASHED BLACK
NRF Color Code: 938

W'S COASTER CORD SHORT | T1312005 | \$75 | 69% ORGANIC COTTON, 28% POLYESTER, 3% ELASTANE | 0-14 | 4" INSEAM | 2/1



W'S COASTER CORD SHORT

Color: NORTH SHORE
NRF Color Code: 409

W'S COASTER CORD SHORT

Color: TULIP
NRF Color Code: 517

W'S COASTER CORD SHORT

Color: FROG
NRF Color Code: 351

W'S COASTER CORD SHORT

Color: FERN DAISY EMBROIDERY
NRF Color Code: 342

W'S TAJ HEMP SHORT | T1312008 | \$65 | 54% HEMP, 44% TENCEL™ LYOCCELL, 2% ELASTANE | XS-XL | 3" INSEAM | 2/1



W'S TAJ HEMP SHORT

Color: CHICORY
NRF Color Code: 461

W'S TAJ HEMP SHORT

Color: JASPER LARGE FLORAL PRINT
NRF Color Code: 343

W'S TAJ HEMP SHORT

Color: TRUE NAVY
NRF Color Code: 414

W'S TAJ HEMP SHORT

Color: TULIP STRIPE
NRF Color Code: 503

W'S TAJ HEMP SHORT

Color: BARLEY STRIPE
NRF Color Code: 289

NEW

W'S TARN SHORT | T1312402 | \$78 | 54% HEMP, 44% TENCEL™ LYOCELL, 2% ELASTANE | XS-XL | 4.5" INSEAM | 2/1



W'S TARN SHORT
Color: BEETLE
NRF Color Code: 365

W'S TARN SHORT
Color: TRUE NAVY
NRF Color Code: 414

NEW

W'S TRAILScape PULL-ON SHORT | T1312403 | \$75 | 100% RECYCLED NYLON | XS-XL | 4" INSEAM | 2/1



W'S TRAILScape PULL-ON SHORT
Color: CHAI
NRF Color Code: 215

W'S TRAILScape PULL-ON SHORT
Color: CORNFLOWER
NRF Color Code: 454

W'S TRAILScape PULL-ON SHORT
Color: ORCHID
NRF Color Code: 511

W'S BOUNDLESS SHORT | T1312006 | \$65 | 67% ORGANIC COTTON, 31% RECYCLED POLYESTER, 2% ELASTANE | XS-XL | 4" INSEAM | 2/1



W'S BOUNDLESS SHORT

Color: UMBER SCENIC
PRINT

NRF Color Code: 649

W'S BOUNDLESS SHORT

Color: CHICORY SUN TILE
PRINT

NRF Color Code: 488

W'S BOUNDLESS SHORT

Color: MATCHA ABSTRACT
PRINT

NRF Color Code: 338

NEW

SUNKISSED PULL-ON SHORT II | T1312404 | \$68 | 88% RECYCLED POLYESTER, 12% ELASTANE | XS-XL | 3" INSEAM | 2/1



**SUNKISSED PULL-ON
SHORT II**

Color: PAPAYA GERANIUM
PRINT

NRF Color Code: 671

**SUNKISSED PULL-ON
SHORT II**

Color: SHASTA PRINT
NRF Color Code: 487

NEW

SUNKISSED PULL-ON SHORT II (TEXTURE) | T1312404 | \$68 | 91% RECYCLED POLYESTER, 9% ELASTANE | XS-XL | 3" INSEAM | 2/1



SUNKISSED PULL-ON SHORT II
Color: BARLEY TEXTURE PRINT
NRF Color Code: 157

SUNKISSED PULL-ON SHORT II
Color: FLAME LEAF TEXTURE PRINT
NRF Color Code: 837

SUNKISSED PULL-ON SHORT II
Color: CINNAMON TEXTURE
NRF Color Code: 607

CHAKA SHORT | T1312208 | \$60 | 48% TENCEL™ LYOCCELL, 48% ORGANIC COTTON, 4% ELASTANE | XS-XL | 4" INSEAM | 2/1



CHAKA SHORT
Color: GREEN MOSS GEO PRINT
NRF Color Code: 341

CHAKA SHORT
Color: NORTH SHORE SPEEDY PRINT
NRF Color Code: 480

CHAKA SHORT
Color: BARLEY MULTI FLORAL PRINT
NRF Color Code: 149

CHAKA SHORT
Color: BLACK
NRF Color Code: 100

NEW

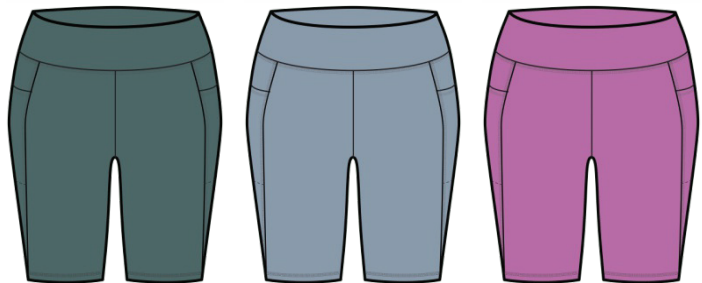
CHAKA SHORT (TEXTURE) | T1312208 | \$60 | 50% RECYCLED POLY, 25% OC, 16% TENCEL™ LYOCELL, 9% ELASTANE | XS-XL | 4" INSEAM | 2/1



CHAKA SHORT
Color: CORNFLOWER
TEXTURE
NRF Color Code: 498

NEW

SUNTRAIL BIKE SHORT | T1312400 | \$65 | 89% RECYCLED NYLON, 11% ELASTANE | XS-XL | 8" INSEAM | 2/1



SUNTRAIL BIKE SHORT
Color: SILVER PINE
NRF Color Code: 321

SUNTRAIL BIKE SHORT
Color: WEATHERED BLUE
NRF Color Code: 481

SUNTRAIL BIKE SHORT
Color: TULIP
NRF Color Code: 517

TERRANE BIKE SHORT | T1312204 | \$48 | 52% ORGANIC COTTON, 34% TENCEL™ LYOCCELL, 14% ELASTANE | XS-XL | 8" INSEAM | 2/1



TERRANE BIKE SHORT

Color: CHICORY FLORAL
PRINT

NRF Color Code: 474

TERRANE BIKE SHORT

Color: JASPER LARGE
FLORAL PRINT

NRF Color Code: 343



WOMEN'S SKIRTS & SKORTS

S24



SUNKISSED WEEKEND SKORT | T1842005 | \$75 | 88% RECYCLED POLY, 12% ELASTANE | XS-XL | 16" SKIRT LENGTH, 5.5" SHORT INSEAM | 2/1



SUNKISSED WEEKEND SKORT

Color: MIDNIGHT FRUIT
PRINT
NRF Color Code: 475

SUNKISSED WEEKEND SKORT

Color: ACAI
KALEIDOSCOPE PRINT
NRF Color Code: 555

SUNKISSED WEEKEND SKORT

Color: BLACK MICRO
FLORAL PRINT
NRF Color Code: 003

SUNKISSED WEEKEND SKORT

Color: BLACK
NRF Color Code: 100

NEW

SUNKISSED WEEKEND SKORT (TEXTURE) | T1842005 | \$75 | 91% REC POLY, 9% ELASTANE | XS-XL | 16" SKIRT LENGTH, 5.5" SHORT INSEAM | 2/1



SUNKISSED WEEKEND SKORT

Color: SALT LEAF
TEXTURE PRINT
NRF Color Code: 386

NEW

SUNKISSED PLEATED SKORT | T1842304 | \$80 | 88% RECYCLED POLY, 12% ELASTANE | XS-XL | 15.5" SKIRT LENGTH, 4" SHORT INSEAM | 2/1



SUNKISSED PLEATED SKORT

Color: TAFFY MICRO FLORAL PRINT
NRF Color Code: 689

SUNKISSED PLEATED SKORT

Color: PAPAYA GERANIUM PRINT
NRF Color Code: 671

SUNKISSED PLEATED SKORT

Color: BLACK
NRF Color Code: 100

NEW

SUNKISSED PLEATED SKORT (TEXTURE) | T1842304 | \$80 | 91% REC POLY, 9% ELASTANE | XS-XL | 15.5"SKIRT LENGTH, 4"SHORT INSEAM | 2/1



SUNKISSED PLEATED SKORT

Color: BARLEY TEXTURE PRINT
NRF Color Code: 157

NEW

SUNKISSED WRAP SKIRT | T1842401 | \$95 | 88% RECYCLED POLYESTER, 12% ELASTANE | XS-XL | 36.5" BACK LENGTH | 2/1

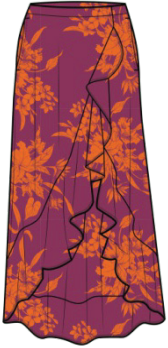


SUNKISSED WRAP SKIRT

Color: BLACK MICRO FLORAL PRINT
NRF Color Code: 003

NEW

SUNKISSED WRAP SKIRT (TEXTURE) | T1842401 | \$95 | 91% RECYCLED POLYESTER, 9% ELASTANE | XS-XL | 36.5" BACK LENGTH | 2/1



SUNKISSED WRAP SKIRT

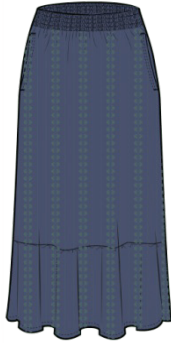
Color: FLAME LEAF TEXTURE PRINT
NRF Color Code: 837

NEW

CIPHER MIDI SKIRT | T1842402 | \$75 | 100% ORGANIC COTTON | XS-XL | 32" LENGTH | 2/1



CIPHER MIDI SKIRT
Color: CINNABAR
NRF Color Code: 609



CIPHER MIDI SKIRT
Color: SILVER PINE
NRF Color Code: 321

NEW

JUNIPER SCOOTER SKIRT | T1842400 | \$85 | 98% ORGANIC COTTON, 2% ELASTANE | 0-14 | 14" SKIRT LENGTH, 4" SHORT INSEAM | 2/1



JUNIPER SCOOTER SKIRT
Color: OLIVE
NRF Color Code: 334



JUNIPER SCOOTER SKIRT
Color: CHAI
NRF Color Code: 215

CHAKA SKIRT | T1182127 | \$68 | 48% TENCEL™ LYOCELL, 48% ORGANIC COTTON, 4% ELASTANE | XS-XL | 20" LENGTH | 2/1



CHAKA SKIRT
Color: MIDNIGHT FLORAL PRINT
NRF Color Code: 426



CHAKA SKIRT
Color: GREEN MOSS GEO PRINT
NRF Color Code: 341



CHAKA SKIRT
Color: SULPHUR HALF DAISY PRINT
NRF Color Code: 731



CHAKA SKIRT
Color: MINERAL LG FLORAL PRINT
NRF Color Code: 469



CHAKA SKIRT
Color: FAWN POLKA DOT PRINT
NRF Color Code: 217



CHAKA SKIRT
Color: BARLEY MULTI FLORAL PRINT
NRF Color Code: 149



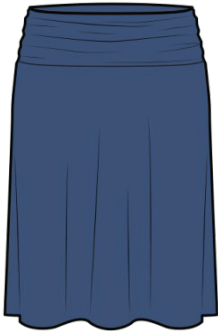
CHAKA SKIRT
Color: PACIFIC HALF DAISY PRINT
NRF Color Code: 490



CHAKA SKIRT
Color: BLACK
NRF Color Code: 100

NEW

CHAKA SKIRT (TEXTURE) | T1182127 | \$68 | 50% RECYCLED POLY, 25% OC, 16% TENCEL™ LYOCELL, 9% ELASTANE | XS-XL | 20" LENGTH | 2/1



CHAKA SKIRT
Color: CORNFLOWER TEXTURE
NRF Color Code: 498

NEW

MARIGOLD RUFFLE SKIRT | T1312401 | \$75 | 48% TENCEL™ LYOCELL, 48% ORGANIC COTTON, 4% ELASTANE | XS-XL | 18" LENGTH | 2/1



MARIGOLD RUFFLE SKIRT
Color: TRUE NAVY LG FLORAL PRINT
NRF Color Code: 443



MARIGOLD RUFFLE SKIRT
Color: NORTH SHORE SPEEDY PRINT
NRF Color Code: 480



MARIGOLD RUFFLE SKIRT
Color: BARLEY MULTI FLORAL PRINT
NRF Color Code: 149



MARIGOLD RUFFLE SKIRT
Color: FAWN POLKA DOT PRINT
NRF Color Code: 217



MARIGOLD RUFFLE SKIRT
Color: BLACK
NRF Color Code: 100

SELEENA SKORT | T1842801 | \$70 | 48% TENCEL™ LYOCELL, 48% OC, 4% ELASTANE | XS-XL | 15.75" SKIRT LENGTH, 5.5" SHORT INSEAM | 2/1



SELEENA SKORT
Color: MIDNIGHT FLORAL PRINT
NRF Color Code: 426



SELEENA SKORT
Color: BARLEY MULTI FLORAL PRINT
NRF Color Code: 149



SELEENA SKORT
Color: PACIFIC HALF DAISY PRINT
NRF Color Code: 490



SELEENA SKORT
Color: BLACK
NRF Color Code: 100

BIRDIE SKORT | T1842208 | \$75 | 48% TENCEL™ LYOCELL, 48% OC, 4% ELASTANE | XS-XL | 16" SKIRT LENGTH, 5.5" SHORT INSEAM | 2/1



BIRDIE SKORT

Color: MIDNIGHT GEO
PRINT

NRF Color Code: 444

BIRDIE SKORT

Color: MINERAL LG
FLORAL PRINT

NRF Color Code: 469

BIRDIE SKORT

Color: BARLEY MULTI
FLORAL PRINT

NRF Color Code: 149

BIRDIE SKORT

Color: BLACK

NRF Color Code: 100

MARIGOLD TIERED MIDI SKIRT | T1841300 | \$95 | 48% TENCEL™ LYOCELL, 48% ORGANIC COTTON, 4% ELASTANE | XS-XL | 32.5" LENGTH | 2/1



MARIGOLD TIERED MIDI SKIRT

Color: FAWN POLKA DOT
PRINT

NRF Color Code: 217

MARIGOLD TIERED MIDI SKIRT

Color: BARLEY MULTI
FLORAL PRINT

NRF Color Code: 149



WOMEN'S DRESSES

S24



ROSEMARIE SL DRESS | T1782204 | \$85 | 48% TENCEL™ LYOCELL, 48% ORGANIC COTTON, 4% ELASTANE | XS-XL | 37" LENGTH | 2/1



ROSEMARIE SL DRESS
Color: MIDNIGHT FLORAL
PRINT
NRF Color Code: 426



ROSEMARIE SL DRESS
Color: BARLEY FLORAL
PRINT
NRF Color Code: 158



ROSEMARIE SL DRESS
Color: SULPHUR HALF
DAISY PRINT
NRF Color Code: 731



ROSEMARIE SL DRESS
Color: NORTH SHORE
SPEEDY PRINT
NRF Color Code: 480



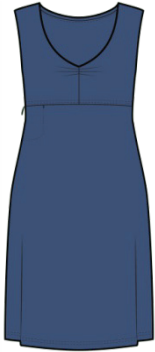
ROSEMARIE SL DRESS
Color: PACIFIC HALF DAISY
PRINT
NRF Color Code: 490



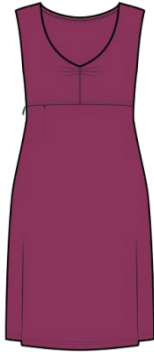
ROSEMARIE SL DRESS
Color: BLACK
NRF Color Code: 100

NEW

ROSEMARIE SL DRESS (TEXTURE) | T1782204 | \$85 | 50% REC POLY, 25% OC, 16% TENCEL™ LYOCELL, 9% ELASTANE | XS-XL | 37" LENGTH | 2/1



ROSEMARIE SL DRESS
Color: CORNFLOWER
TEXTURE
NRF Color Code: 498



ROSEMARIE SL DRESS
Color: BOYSENBERRY
TEXTURE
NRF Color Code: 524

ROSEMARIE DRESS | T1772811 | \$88 | 48% TENCEL™ LYOCELL, 48% ORGANIC COTTON, 4% ELASTANE | XS-XL | 37" LENGTH | 2/1



ROSEMARIE DRESS
Color: MIDNIGHT GEO
PRINT
NRF Color Code: 444



ROSEMARIE DRESS
Color: MINERAL LG
FLORAL PRINT
NRF Color Code: 469



ROSEMARIE DRESS
Color: NORTH SHORE
MULTI STRIPE
NRF Color Code: 465



ROSEMARIE DRESS
Color: BARLEY MULTI
FLORAL PRINT
NRF Color Code: 149



ROSEMARIE DRESS
Color: PACIFIC HALF DAISY
PRINT
NRF Color Code: 490



ROSEMARIE DRESS
Color: BLACK
NRF Color Code: 100

CUE WRAP SS DRESS | T1782003 | \$95 | 48% TENCEL™ LYOCELL, 48% ORGANIC COTTON, 4% ELASTANE | XS-XL | 36.5" LENGTH | 2/1



CUE WRAP SS DRESS
Color: GREEN MOSS GEO
PRINT
NRF Color Code: 341



CUE WRAP SS DRESS
Color: MINERAL LG
FLORAL PRINT
NRF Color Code: 469



CUE WRAP SS DRESS
Color: FAWN POLKA DOT
PRINT
NRF Color Code: 217



CUE WRAP SS DRESS
Color: BLACK
NRF Color Code: 100

WINDMERE II SL DRESS | T1781910 | \$85 | 48% TENCEL™ LYOCCELL, 48% ORGANIC COTTON, 4% ELASTANE | XS-XL | 35" LENGTH | 2/1



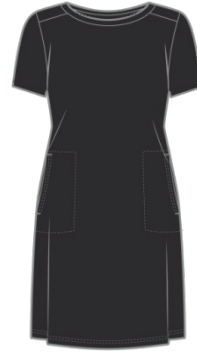
WINDMERE II SS DRESS
Color: NORTH SHORE
MULTI STRIPE
NRF Color Code: 465



WINDMERE II SS DRESS
Color: BARLEY MULTI
FLORAL PRINT
NRF Color Code: 149



WINDMERE II SS DRESS
Color: PACIFIC HALF DAISY
PRINT
NRF Color Code: 490



WINDMERE II SS DRESS
Color: BLACK
NRF Color Code: 100

MARLEY TIERED SL DRESS | T1782308 | \$90 | 48% TENCEL™ LYOCCELL, 48% ORGANIC COTTON, 4% ELASTANE | XS-XL | 35" LENGTH | 2/1



MARLEY TIERED SL DRESS
Color: MIDNIGHT FLORAL
PRINT
NRF Color Code: 426



MARLEY TIERED SL DRESS
Color: SULPHUR HALF
DAISY PRINT
NRF Color Code: 731



MARLEY TIERED SL DRESS
Color: TRUE NAVY LG
FLORAL PRINT
NRF Color Code: 443



MARLEY TIERED SL DRESS
Color: BARLEY MULTI
FLORAL PRINT
NRF Color Code: 149



MARLEY TIERED SL DRESS
Color: BLACK
NRF Color Code: 100

NEW

PLUMERIA HALTER SL DRESS | T1782402 | \$90 | 48% TENCEL™ LYOCCELL, 48% OC, 4% ELASTANE | XS-XL | 26" LENGTH AT CENTER FRONT | 2/1



PLUMERIA HALTER SL DRESS
Color: BARLEY FLORAL PRINT
NRF Color Code: 158



PLUMERIA HALTER SL DRESS
Color: TRUE NAVY LG FLORAL PRINT
NRF Color Code: 443



PLUMERIA HALTER SL DRESS
Color: PACIFIC HALF DAISY PRINT
NRF Color Code: 490



PLUMERIA HALTER SL DRESS
Color: BLACK
NRF Color Code: 100

NEW

PLUMERIA HALTER SL DRESS (TEXTURE) | T1782402 | \$90 | 50% REC POLY, 25% OC, 16% TENCEL™, 9% ELASTANE | XS-XL | 26" LENGTH | 2/1



PLUMERIA HALTER SL DRESS
Color: BOYSENBERRY TEXTURE
NRF Color Code: 524

NEW

DANDELION MIDI SL DRESS | T1782403 | \$98 | 48% TENCEL™ LYOCCELL, 48% ORGANIC COTTON, 4% ELASTANE | XS-XL | 39" LENGTH | 2/1



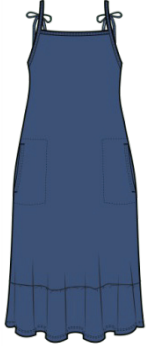
DANDELION MIDI SL DRESS
Color: MINERAL LG FLORAL PRINT
NRF Color Code: 469



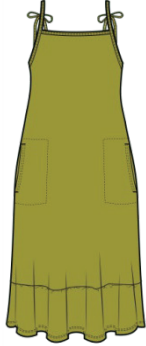
DANDELION MIDI SL DRESS
Color: BARLEY MULTI FLORAL PRINT
NRF Color Code: 149

NEW

DANDELION MIDI SL DRESS (TEXTURE) | T1782403 | \$98 | 50% REC POLY, 25% OC, 16% TENCEL™, 9% ELASTANE | XS-XL | 39" LENGTH | 2/1



DANDELION MIDI SL DRESS
Color: CORNFLOWER TEXTURE
NRF Color Code: 498



DANDELION MIDI SL DRESS
Color: LIME TEXTURE
NRF Color Code: 336

PIRU HENLEY MIDI TANK DRESS | T1782202 | \$90 | 73% RECYCLED POLYESTER, 17% HEMP, 10% ELASTANE | XS-XL | 46" LENGTH | 2/1



PIRU HENLEY MIDI TANK DRESS

Color: SILVER PINE
NRF Color Code: 321



PIRU HENLEY MIDI TANK DRESS

Color: PACIFIC BLUE
NRF Color Code: 470

NEW

GEMINA V SL JUMPSUIT | T1782401 | \$115 | 48% TENCEL™ LYOCCELL, 48% ORGANIC COTTON, 4% ELASTANE | XS-XL | 25" INSEAM | 2/1



GEMINA V SL JUMPSUIT

Color: TRUE NAVY LG
FLORAL PRINT
NRF Color Code: 443



GEMINA V SL JUMPSUIT

Color: BLACK
NRF Color Code: 100

TAJ HEMP STRAPPY JUMPSUIT | T1782303 | \$125 | 54% HEMP, 44% TENCEL™ LYOCELL, 2% ELASTANE | XS-XL | 25" INSEAM | 2/1



TAJ HEMP STRAPPY JUMPSUIT

Color: CHICORY
NRF Color Code: 461



TAJ HEMP STRAPPY JUMPSUIT

Color: JASPER LARGE FLORAL PRINT
NRF Color Code: 343



TAJ HEMP STRAPPY JUMPSUIT

Color: TRUE NAVY
NRF Color Code: 414



TAJ HEMP STRAPPY JUMPSUIT

Color: TULIP STRIPE
NRF Color Code: 503

NEW

TARN SL ROMPER | T1782405 | \$95 | 54% HEMP, 44% TENCEL™ LYOCELL, 2% ELASTANE | XS-XL | 4" INSEAM | 2/1



TARN SL ROMPER

Color: BEETLE
NRF Color Code: 365



TARN SL ROMPER

Color: OATMEAL
NRF Color Code: 284

MANZANA TIERED SL DRESS | T1782208 | \$90 | 100% ORGANIC COTTON | XS-XL | 36.5" LENGTH | 2/1



MANZANA TIERED SL DRESS

Color: POLLEN SMALL FLORAL PRINT
NRF Color Code: 712

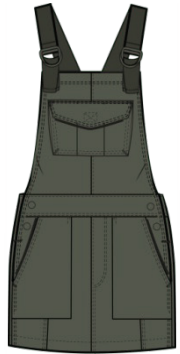


MANZANA TIERED SL DRESS

Color: STARSHINE PRINT
NRF Color Code: 917

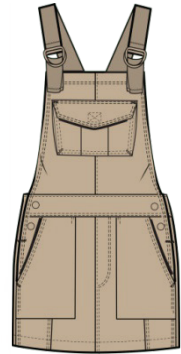
NEW

TRAILScape JUMPER | T1782411 | \$110 | 100% RECYCLED NYLON | XS-XL | 14.5" SKIRT LENGTH | 2/1



TRAILScape JUMPER

Color: BEETLE
NRF Color Code: 365



TRAILScape JUMPER

Color: CHAI
NRF Color Code: 215

NEW

SUNKISSED SUNSANA SL DRESS | T1782309 | \$98 | 88% RECYCLED POLYESTER, 12% ELASTANE | XS-XL | 36.5" LENGTH | 2/1



SUNKISSED SUNSANA SL DRESS
Color: ACAI
KALEIDOSCOPE PRINT
NRF Color Code: 555



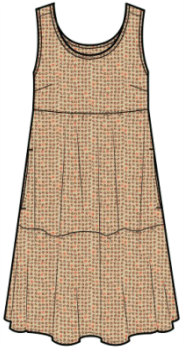
SUNKISSED SUNSANA SL DRESS
Color: TAFFY MICRO
FLORAL PRINT
NRF Color Code: 689



SUNKISSED SUNSANA SL DRESS
Color: BLACK
NRF Color Code: 100

NEW

SUNKISSED SUNSANA SL DRESS (TEXTURE) | T1782309 | \$98 | 91% RECYCLED POLYESTER, 9% ELASTANE | XS-XL | 36.5" LENGTH | 2/1



SUNKISSED SUNSANA SL DRESS
Color: BARLEY TEXTURE
PRINT
NRF Color Code: 157

SUNKISSED SL SKORT DRESS | T1782300 | \$98 | 88% RECYCLED POLYESTER, 12% ELASTANE | XS-XL | 29" LENGTH, 5.5" SHORT INSEAM | 2/1



SUNKISSED SL SKORT DRESS

Color: MIDNIGHT FRUIT
PRINT
NRF Color Code: 475



SUNKISSED SL SKORT DRESS

Color: BLACK MICRO
FLORAL PRINT
NRF Color Code: 003



SUNKISSED SL SKORT DRESS

Color: PAPAYA GERANIUM
PRINT
NRF Color Code: 671

NEW

SUNKISSED SL SKORT DRESS (TEXTURE) | T1782300 | \$98 | 91% RECYCLED POLY, 9% ELASTANE | XS-XL | 29" LENGTH, 5.5" INSEAM | 2/1



SUNKISSED SL SKORT DRESS

Color: SALT LEAF
TEXTURE PRINT
NRF Color Code: 386

NEW

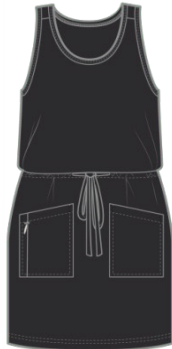
LIVVY SL DRESS | T1782406 | \$90 | 88% RECYCLED POLYESTER, 12% ELASTANE | XS-XL | 36" LENGTH | 2/1



LIVVY SL DRESS
Color: ACAI
KALEIDOSCOPE PRINT
NRF Color Code: 555



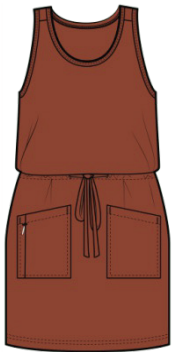
LIVVY SL DRESS
Color: SHASTA PRINT
NRF Color Code: 487



LIVVY SL DRESS
Color: BLACK
NRF Color Code: 100

NEW

LIVVY SL DRESS (TEXTURE) | T1782406 | \$90 | 91% RECYCLED POLYESTER, 9% ELASTANE | XS-XL | 36" LENGTH | 2/1



LIVVY SL DRESS
Color: CINNAMON
TEXTURE
NRF Color Code: 607

SUNKISSED LIV ROMPER | T1782116 | \$95 | 88% RECYCLED POLYESTER, 12% ELASTANE | XS-XL | 3" INSEAM | 2/1



SUNKISSED LIV ROMPER

Color: BLACK MICRO FLORAL PRINT
NRF Color Code: 003

NEW

SUNKISSED LIV ROMPER (TEXTURE) | T1782116 | \$95 | 91% RECYCLED POLYESTER, 9% ELASTANE | XS-XL | 3" INSEAM | 2/1



SUNKISSED LIV ROMPER

Color: BARLEY TEXTURE PRINT
NRF Color Code: 157



SUNKISSED LIV ROMPER

Color: FLAME LEAF TEXTURE PRINT
NRF Color Code: 837

NEW

LIVVY SL JUMPSUIT | T1782404 | \$115 | 88% RECYCLED POLYESTER, 12% ELASTANE | XS-XL | 25" INSEAM | 2/1



LIVVY SL JUMPSUIT
Color: TAFFY MICRO
FLORAL PRINT
NRF Color Code: 689



LIVVY SL JUMPSUIT
Color: BLACK
NRF Color Code: 100

NEW

LIVVY SL JUMPSUIT (TEXTURE) | T1782404 | \$115 | 91% RECYCLED POLYESTER, 9% ELASTANE | XS-XL | 25" INSEAM | 2/1



LIVVY SL JUMPSUIT
Color: SALT LEAF
TEXTURE PRINT
NRF Color Code: 386

SUNKISSED MAXI DRESS | T1792702 | \$110 | 88% RECYCLED POLYESTER, 12% ELASTANE | XS-XL | 46" LENGTH | 2/1



SUNKISSED MAXI DRESS

Color: MIDNIGHT FRUIT
PRINT

NRF Color Code: 475



SUNKISSED MAXI DRESS

Color: BLACK MICRO
FLORAL PRINT

NRF Color Code: 003



SUNKISSED MAXI DRESS

Color: BLACK

NRF Color Code: 100

NEW

SUNKISSED MAXI DRESS (TEXTURE) | T1792702 | \$110 | 91% RECYCLED POLYESTER, 9% ELASTANE | XS-XL | 46" LENGTH | 2/1



SUNKISSED MAXI DRESS

Color: FLAME LEAF
TEXTURE PRINT

NRF Color Code: 837



SUNKISSED MAXI DRESS

Color: SALT LEAF
TEXTURE PRINT

NRF Color Code: 386

NEW

SUNKISSED TIERED SL DRESS | T1782412 | \$125 | 88% RECYCLED POLYESTER, 12% ELASTANE | XS-XL | 49" LENGTH | 2/1



SUNKISSED TIERED SL DRESS

Color: MIDNIGHT FRUIT PRINT

NRF Color Code: 475



SUNKISSED TIERED SL DRESS

Color: BLACK MICRO FLORAL PRINT

NRF Color Code: 003



SUNKISSED TIERED SL DRESS

Color: PAPAYA GERANIUM PRINT

NRF Color Code: 671



SUNKISSED TIERED SL DRESS

Color: BLACK

NRF Color Code: 100



WOMEN'S KNIT TOPS

S24



THESE TEES DO GOOD

20% of the sales from our S24 graphic tees give back to organizations that prioritize equity and accessibility in the outdoors. Every shirt makes a difference when we're all in it together.



BENEFITTING:
Search For Adventure

Search for Adventure is a unique travel program we co-founded that offers people with disabilities vacation experiences.



BENEFITTING:
MOVE SB

MOVE Santa Barbara County advocates for equitable county-wide infrastructure for walking, cycling and public transit.



BENEFITTING:
Brave Trails

Brave Trails is a national non-profit dedicated to LGBTQ+ youth leadership.



BENEFITTING:
Wilderness Inquiry

Wilderness Inquiry connects people of all ages, backgrounds, identities and abilities through shared outdoor adventures.

NEW

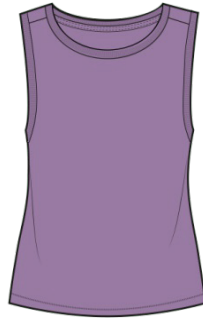
W'S BOUNDLESS JERSEY TANK | T1112400 | \$45 | 55% ORGANIC COTTON, 45% RECYCLED POLYESTER | XS-XL | 23" LENGTH | 2/1



W'S BOUNDLESS JERSEY TANK
Color: CHAI
NRF Color Code: 215



W'S BOUNDLESS JERSEY TANK
Color: MIDNIGHT
NRF Color Code: 453



W'S BOUNDLESS JERSEY TANK
Color: ORCHID
NRF Color Code: 511



W'S BOUNDLESS JERSEY TANK
Color: PALE SLATE TIE DYE
NRF Color Code: 436



W'S BOUNDLESS JERSEY TANK
Color: MANDARIN TIE DYE
NRF Color Code: 838

NEW

W'S BOUNDLESS JERSEY SS CREW | T1002401 | \$50 | 55% ORGANIC COTTON, 45% RECYCLED POLYESTER | XS-XL | 22" LENGTH | 2/1



W'S BOUNDLESS JERSEY SS CREW
Color: CHAI
NRF Color Code: 215



W'S BOUNDLESS JERSEY SS CREW
Color: MIDNIGHT
NRF Color Code: 453



W'S BOUNDLESS JERSEY SS CREW
Color: ORCHID
NRF Color Code: 511



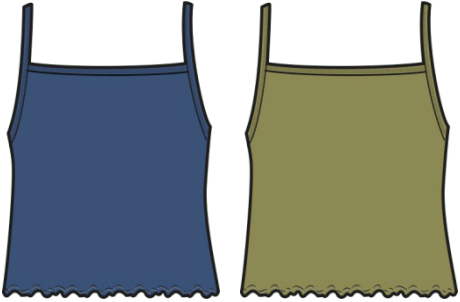
W'S BOUNDLESS JERSEY SS CREW
Color: PALE SLATE TIE DYE
NRF Color Code: 436



W'S BOUNDLESS JERSEY SS CREW
Color: MANDARIN TIE DYE
NRF Color Code: 838

NEW

FOOTHILL TANK | T1112403 | \$40 | 55% ORGANIC COTTON, 45% RECYCLED POLYESTER | XS-XL | 16.5" LENGTH | 2/1

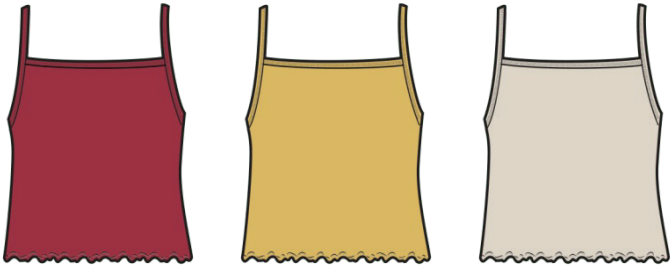


FOOTHILL TANK
Color: CORNFLOWER
NRF Color Code: 454

FOOTHILL TANK
Color: GREEN OLIVE
NRF Color Code: 379

NEW

FOOTHILL POINTELLE TANK | T1112404 | \$40 | 55% ORGANIC COTTON, 45% RECYCLED POLYESTER | XS-XL | 16.5" LENGTH | 2/1



FOOTHILL POINTELLE TANK
Color: CINNABAR
NRF Color Code: 609

FOOTHILL POINTELLE TANK
Color: CHAMOMILE
NRF Color Code: 770

FOOTHILL POINTELLE TANK
Color: SALT
NRF Color Code: 199

NEW

FOOTHILL SS BABY TEE | T1002400 | \$45 | 55% ORGANIC COTTON, 45% RECYCLED POLYESTER | XS-XL | 21.5" LENGTH | 2/1



FOOTHILL SS BABY TEE **FOOTHILL SS BABY TEE**
 Color: CORNFLOWER Color: GREEN OLIVE
 NRF Color Code: 454 NRF Color Code: 379

NEW

FOOTHILL POINTELLE SS BABY TEE | T1002405 | \$45 | 55% ORGANIC COTTON, 45% RECYCLED POLYESTER | XS-XL | 21.5" LENGTH | 2/1



FOOTHILL POINTELLE SS BABY TEE **FOOTHILL POINTELLE SS BABY TEE** **FOOTHILL POINTELLE SS BABY TEE**
 Color: CINNABAR Color: CHAMOMILE Color: SALT
 NRF Color Code: 609 NRF Color Code: 770 NRF Color Code: 199

W'S PRIMO SS CREW | T1001900 | \$45 | 100% ORGANIC COTTON | XS-XL | 24.5" LENGTH | 2/1



W'S PRIMO SS CREW

Color: BOYSENBERRY TIE DYE

NRF Color Code: 512

W'S PRIMO SS CREW

Color: LIMEADE TIE DYE

NRF Color Code: 325

W'S PRIMO SS CREW EMBROIDERED | T1001915 | \$48 | 100% ORGANIC COTTON | XS-XL | 24.5" LENGTH | 2/1



W'S PRIMO SS CREW EMBROIDERED

Color: WEATHERED BLUE EMBROIDERY

NRF Color Code: 500

W'S PRIMO SS CREW EMBROIDERED

Color: PASTURE SUN EMBROIDERY

NRF Color Code: 915

W'S GROM TANK | T1112002 | \$48 | 55% HEMP, 45% ORGANIC COTTON | XS-XL | 24" LENGTH | 2/1



W'S GROM TANK
Color: ACORN MULTI STRIPE
NRF Color Code: 704

W'S GROM TANK
Color: MINERAL MULTI STRIPE
NRF Color Code: 410

W'S GROM TANK
Color: SALT STRIPE II
NRF Color Code: 116

W'S GROM TANK
Color: TRUE NAVY STRIPE II
NRF Color Code: 489

WS GROM RINGER SS CREW | T1002303 | \$60 | 55% HEMP, 45% ORGANIC COTTON | XS-XL | 24.5" LENGTH | 2/1



WS GROM RINGER SS CREW
Color: ACORN MULTI STRIPE
NRF Color Code: 704

WS GROM RINGER SS CREW
Color: MINERAL MULTI STRIPE
NRF Color Code: 410

WS GROM RINGER SS CREW
Color: SALT STRIPE II
NRF Color Code: 116

WS GROM RINGER SS CREW
Color: TRUE NAVY STRIPE II
NRF Color Code: 489

ROSE SS TEE | T1002110 | \$55 | 58% ORGANIC COTTON, 39% TENCEL™ LYOCELL, 3% ELASTANE | XS-XL | 24" LENGTH | 2/1



ROSE SS TEE

Color: EGRET
NRF Color Code: 020

ROSE SS TEE

Color: HIGH TIDE
NRF Color Code: 940

ROSE SS TEE

Color: CINNAMON
NRF Color Code: 646

ROSE SS TEE

Color: BLACK
NRF Color Code: 100

ANZA SS SHIRT | T1002006 | \$55 | 58% ORGANIC COTTON, 39% TENCEL™ LYOCELL, 3% ELASTANE | XS-XL | 18" LENGTH | 2/1



ANZA SS SHIRT

Color: EGRET
NRF Color Code: 020

ANZA SS SHIRT

Color: HIGH TIDE
NRF Color Code: 940

ANZA SS SHIRT

Color: CINNAMON
NRF Color Code: 646

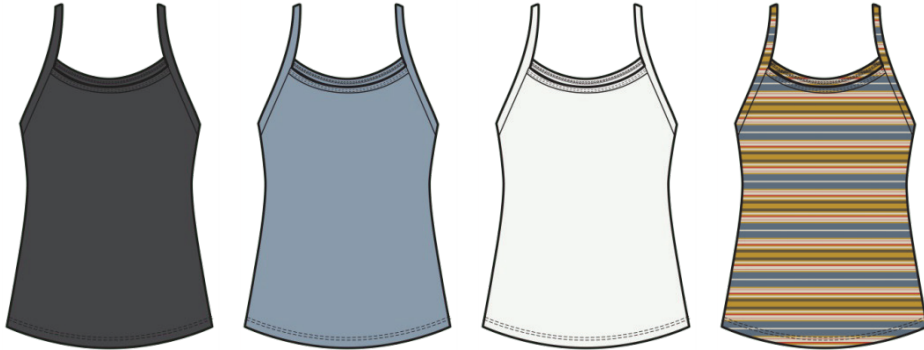
ANZA SS SHIRT

Color: JASPER
NRF Color Code: 380

ANZA SS SHIRT

Color: BLACK
NRF Color Code: 100

SAMBA DIA CAMI | T1112013 | \$35 | 59% ORGANIC COTTON, 38% TENCEL™ LYOCELL, 3% ELASTANE | XS-XL | 19.5" LENGTH | 2/1



SAMBA DIA CAMI
Color: SOOT
NRF Color Code: 089

SAMBA DIA CAMI
Color: WEATHERED BLUE
NRF Color Code: 481

SAMBA DIA CAMI
Color: WHITE
NRF Color Code: 000

SAMBA DIA CAMI
Color: NORTH SHORE
MULTI STRIPE
NRF Color Code: 465

RUFFLITA II TEE | T1112011 | \$50 | 59% ORGANIC COTTON, 38% TENCEL™ LYOCELL, 3% ELASTANE | XS-XL | 26" LENGTH | 2/1



RUFFLITA II TEE
Color: PAPAYA
NRF Color Code: 826

RUFFLITA II TEE
Color: SILVER PINE
NRF Color Code: 321

RUFFLITA II TEE
Color: SOOT
NRF Color Code: 089

RUFFLITA II TEE
Color: WEATHERED BLUE
NRF Color Code: 481

RUFFLITA II TEE
Color: WHITE
NRF Color Code: 000

MARLEY II SS TEE | T1002013 | \$55 | 59% ORGANIC COTTON, 38% TENCEL™ LYOCELL, 3% ELASTANE | XS-XL | 26" LENGTH | 2/1



MARLEY II SS TEE
Color: ACORN
NRF Color Code: 761



MARLEY II SS TEE
Color: CHIVE
NRF Color Code: 348



MARLEY II SS TEE
Color: CORNFLOWER
NRF Color Code: 454



MARLEY II SS TEE
Color: WHITE
NRF Color Code: 000



MARLEY II SS TEE
Color: PAPAYA
NRF Color Code: 826



MARLEY II SS TEE
Color: SILVER PINE
NRF Color Code: 321



MARLEY II SS TEE
Color: SOOT
NRF Color Code: 089



MARLEY II SS TEE
Color: WEATHERED BLUE
NRF Color Code: 481



MARLEY II SS TEE
Color: NORTH SHORE
MULTI STRIPE
NRF Color Code: 465

PIRU HENLEY TANK | T1002107 | \$48 | 73% RECYCLED POLYESTER, 17% HEMP, 10% ELASTANE | XS-XL | 24" LENGTH | 2/1



PIRU HENLEY TANK

Color: POLLEN
NRF Color Code: 705

PIRU HENLEY TANK

Color: PACIFIC BLUE
NRF Color Code: 470

PIRU HENLEY TANK

Color: SALT
NRF Color Code: 199

PIRU HENLEY TANK

Color: SILVER PINE
NRF Color Code: 321

PIRU SS EASY TEE | T1002302 | \$60 | 73% RECYCLED POLYESTER, 17% HEMP, 10% ELASTANE | XS-XL | 23" LENGTH | 2/1



PIRU SS EASY TEE

Color: POLLEN
NRF Color Code: 705

PIRU SS EASY TEE

Color: PACIFIC BLUE
NRF Color Code: 470

PIRU SS EASY TEE

Color: SALT
NRF Color Code: 199

PIRU SS EASY TEE

Color: SILVER PINE
NRF Color Code: 321

BIANCA TANK | T1112300 | \$75 | 70% ORGANIC COTTON, 30% RECYLED COTTON | XS-XL | 18" LENGTH | 2/1



BIANCA TANK

Color: UMBER
NRF Color Code: 602

BIANCA TANK

Color: TRUE NAVY STRIPE
NRF Color Code: 408

BIANCA TANK

Color: POPPY TIE DYE
NRF Color Code: 827

NEW

W'S HEMP DAYBREAKER SS SHIRT | T1002403 | \$80 | 80% ORGANIC COTTON, 20% HEMP | XS-XL | 21.5" LENGTH | 2/1



**W'S HEMP
DAYBREAKER SS SHIRT**

Color: OLIVE TREE
NRF Color Code: 708

**W'S HEMP
DAYBREAKER SS SHIRT**

Color: PACIFIC BLUE
NRF Color Code: 470

TERRANE LONGLINE BRALETTE | T1202200 | \$45 | 52% ORGANIC COTTON, 34% TENCEL™ LYOCELL, 14% ELASTANE | XS-XL | 2/1



**TERRANE LONGLINE
BRALETTE**

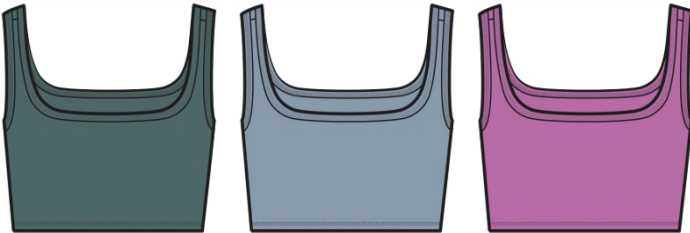
Color: CHICORY FLORAL
PRINT
NRF Color Code: 474

**TERRANE LONGLINE
BRALETTE**

Color: JASPER LARGE
FLORAL PRINT
NRF Color Code: 343

NEW

SUNTRAIL TANK | T1112408 | \$50 | 89% RECYCLED NYLON, 11% ELASTANE | XS-XL | 15.5" LENGTH | 2/1



SUNTRAIL TANK

Color: SILVER PINE
NRF Color Code: 321

SUNTRAIL TANK

Color: WEATHERED BLUE
NRF Color Code: 481

SUNTRAIL TANK

Color: TULIP
NRF Color Code: 517



WOMEN'S WOVEN TOPS

S24



NEW

CIPHER TANK | T1112407 | \$55 | 100% ORGANIC COTTON | XS-XL | 16.5" LENGTH | 2/1



CIPHER TANK
Color: CINNABAR
NRF Color Code: 609

CIPHER TANK
Color: SILVER PINE
NRF Color Code: 321

NEW

MANZANA RUFFLE TANK | T1112405 | \$60 | 100% ORGANIC COTTON | XS-XL | 21" LENGTH | 2/1



MANZANA RUFFLE TANK
Color: EGRET
NRF Color Code: 020

MANZANA RUFFLE TANK
Color: POLLEN SMALL
FLORAL PRINT
NRF Color Code: 712

MANZANA RUFFLE TANK
Color: STARSHINE PRINT
NRF Color Code: 917

SUNKISSED TANK | T1112202 | \$55 | 88% RECYCLED POLYESTER, 12% ELASTANE | XS-XL | 24" LENGTH | 2/1



SUNKISSED TANK
Color: BLACK MICRO
FLORAL PRINT
NRF Color Code: 003



SUNKISSED TANK
Color: BLACK
NRF Color Code: 100

NEW

SUNKISSED TANK (TEXTURE) | T1112202 | \$55 | 91% RECYCLED POLYESTER, 9% ELASTANE | XS-XL | 24" LENGTH | 2/1



SUNKISSED TANK
Color: BARLEY TEXTURE
PRINT
NRF Color Code: 157



SUNKISSED TANK
Color: FLAME LEAF
TEXTURE PRINT
NRF Color Code: 837

NEW

TAJ HEMP BUTTON BACK TANK II | T1112406 | \$55 | 54% HEMP, 44% TENCEL™ LYOCCELL, 2% ELASTANE | XS-XL | 20" LENGTH | 2/1



TAJ HEMP BUTTON BACK TANK II
Color: JASPER LARGE FLORAL PRINT
NRF Color Code: 343

TAJ HEMP BUTTON BACK TANK II
Color: TULIP STRIPE
NRF Color Code: 503

TAJ HEMP BUTTON BACK TANK II
Color: BARLEY STRIPE
NRF Color Code: 289

CAMP COVE SS SHIRT | T1002010 | \$70 | 100% ORGANIC COTTON | XS-XL | 25" LENGTH | 2/1



CAMP COVE SS SHIRT
Color: NORTH SHORE II
NRF Color Code: 514

CAMP COVE SS SHIRT
Color: SALT FRUIT PRINT
NRF Color Code: 109

CAMP COVE SS SHIRT
Color: ROCKROSE
NRF Color Code: 666

CAMP COVE SS SHIRT
Color: MANTIS KALAMKARI PRINT
NRF Color Code: 262

CAMP COVE SS SHIRT
Color: BARLEY STRIPE
NRF Color Code: 289

NEW

W'S FLETCHER SS SHIRT | T1002404 | \$75 | 99% ORGANIC COTTON, 1% ELASTANE | XS-XL | 22" LENGTH | 2/1



W'S FLETCHER SS SHIRT

Color: UMBER LARGE
FLORAL PRINT
NRF Color Code: 612

W'S FLETCHER SS SHIRT

Color: IRIS
NRF Color Code: 591



WOMEN'S LAYERS

S24



FOOTHILL LS HOODIE | T1082202 | \$80 | 55% ORGANIC COTTON, 45% RECYCLED POLYESTER | XS-XL | 23" LENGTH | 2/1



FOOTHILL LS HOODIE

Color: CORNFLOWER
NRF Color Code: 454

FOOTHILL LS HOODIE

Color: GREEN OLIVE
NRF Color Code: 379

NEW

W'S SWIFTY LS HOODIE | T1002406 | \$88 | 76% POLYESTER, 19% TENCEL™ LYOCCELL, 5% ELASTANE | XS-XL | 24" LENGTH | 2/1



W'S SWIFTY LS HOODIE

Color: RAISIN
NRF Color Code: 506

W'S SWIFTY LS HOODIE

Color: JASPER
NRF Color Code: 380

W'S SWIFTY LS HOODIE

Color: LIGHT ASH
NRF Color Code: 56

W'S HEMP DAYBREAKER CARDI | T1082301 | \$110 | 80% ORGANIC COTTON, 20% HEMP | XS-XL | 21.5" LENGTH | 2/1



**W'S HEMP
DAYBREAKER CARDI**

Color: OLIVE TREE
NRF Color Code: 708

**W'S HEMP
DAYBREAKER CARDI**

Color: PACIFIC BLUE
NRF Color Code: 470

BIANCA CREW CARDIGAN | T1001303 | \$125 | 70% ORGANIC COTTON, 30% RECYLED COTTON | XS-XL | 20" LENGTH | 2/1



**BIANCA CREW
CARDIGAN**

Color: TRUE NAVY STRIPE
NRF Color Code: 408

**BIANCA CREW
CARDIGAN**

Color: UMBER POPPY
EMBROIDERY
NRF Color Code: 804

**BIANCA CREW
CARDIGAN**

Color: POPPY TIE DYE
NRF Color Code: 827

W'S CONIFER SHIRT JACKET | T1241305 | \$140 | 85% RECYCLED COTTON, 15% RECYCLED POLYESTER | XS-XL | 29" LENGTH | 2/1



W'S CONIFER SHIRT JACKET

Color: PACIFIC BLUE
NRF Color Code: 470

W'S CONIFER SHIRT JACKET

Color: CHAI PLAID
NRF Color Code: 317

NEW

W'S WANDERWELL SAFARI JACKET | T1542401 | \$130 | 98% ORGANIC COTTON, 2% ELASTANE | XS-XL | 19.5" LENGTH | 2/1



W'S WANDERWELL SAFARI JACKET

Color: UMBER
NRF Color Code: 602

W'S WANDERWELL SAFARI JACKET

Color: BEETLE
NRF Color Code: 365

W'S FORESTER PASS RAGLAN JACKET | T1541003 | \$130 | 100% RECYCLED NYLON | XS-XL | 23" LENGTH | 2/1



**W'S FORESTER PASS
RAGLAN JACKET**

Color: CHICORY
NRF Color Code: 461

**W'S FORESTER PASS
RAGLAN JACKET**

Color: CINNABAR
NRF Color Code: 609



Contact List

NORTHWEST

AK, ID, MT, OR, WA
TOKUL CREEK MARKETING

Paul Dukich
pauldukich@tokulcreekmarketing.com
211 Main Ave N,
North Bend, WA 98045
ph 206-420-4903
c 425-785-6790

Steve Beaudoin
steve@tokulcreekmarketing.com
ph 206-420-4903

Tyler Noonan
tyler@tokulcreekmarketing.com
c 720-236-2123

Erin Belcher
erin@tokulcreekmarketing.com
c 615-419-2759

WEST

CA, HI, NV, AZ
BLUE SKY
Dom Schwartz
dschwartz@mcn.org
32551 Albion Ridge Road
Albion CA 95410
c 707-367-4463

Fred Riley
fred.riley@blueskygroup.org
ph 949-498-5866

Stacie Lucas
stacie.bluesky@yahoo.com
c 310-383-6478

Cole Schwartz
Cole.schwartz@blueskygroup.org
c 415-261-7551

ROCKIES

CO, NM, UT, WY
GRANITE MARKETING INC.
Steve Copeland
graniterep@mac.com
11111 W. 6th Ave Suite D,
Lakewood, CO 80215
c 303-902-6128

Marvin Wedell
ourwilderness@gmail.com
c 720-317-1110

Mike McCord
mike.mccord.rep@gmail.com
c 303-358-3661

GREAT LAKES

IN, KY, LOWER MI, OH
SURROUNDED BY LAKES

Tom Lawrence
Toml.greatlakes@gmail.com
c 248-675-9094

MIDWEST

IA, IL, UPR MI, MN, MO, NE, ND, SD, WI
THE ASCENTIALS

**Pam Schwarzbach +
Troy Kattreh**
office@theascentials.com
3741 Hillcrest Dr.
Madison, WI 53705
c 608-772-2888
f 866-852-7734

SO CENTRAL

AR, KS, LA, OK, TX
Dealer Sales Representatives
dealersales@toadandco.com
ph 805-879-9208

NORTHEAST

CT, MA, ME, NH, RI, VT
STONER//ANDREWS
Allison Frazier
afrazier@stonerandrews.com
c 802-598-0274

Jason Giroux
jgiroux@stonerandrews.com
ph 802-923-6786

Mike Derhammer
mderhammer@stonerandrews.com
c 603-969-9838

Val Cyr
vcyr@stonerandrews.com
c 802-307-2497

Mail to: 1354 Marshall Avenue,
Williston, VT 05495
ph 802-985-9456
f 802-985-9461

MID-ATLANTIC

DC, DE, MD, NJ, NY, PA
DIY OUTDOOR
Tad Fox
DIYOutdoor@gmail.com
4 House Wren
Hackettstown, NJ 07840
c 973-722-4491
f 908-441-6481

Lorna Wheeler
lornabwheeler@gmail.com
c 585-370-4576

SOUTHEAST

AL, FL, GA, MS, NC, SC, TN, VA, WV
VENTURE OUT, INC.
Katherine 'K.C.' Corbett
kc@ventureoutinc.com
c 770-861-2266

Elizabeth Callahan
elizabeth@ventureoutinc.com

24/7 Dealer Support
orders@ventureoutinc.com
c 828-620-9731

CANADA

MOMENTUM DISTRIBUTION INC.
info@momentumd.com
8845-C, boul. du Quartier
Brossard (Qc) J4Y 0R2 Canada
ph 450-466-5115
toll free 866-305-5115
f 450-466-2888

TOAD&CO HEADQUARTERS

2020 Alameda Padre Serra, Suite 125
Santa Barbara, CA 93103
dealersales@toadandco.com
ph 800-865-TOAD
www.toadandco.com

Megan Fulton
National Sales Manager
mfulton@toadandco.com
c 503-860-8997

Dealer Sales Representatives
dealersales@toadandco.com
ph 805-879-9208